

Historic, Archive Document

Do not assume content reflects current scientific knowledge, policies, or practices.

6357

4/19/40

LIBRARY
RECEIVED
☆ APR 22 1940 ☆
U. S. Department of Agriculture.



TURNER BROS. NURSERY • West Long Branch, New Jersey

GARDENS THAT WERE PLANNED



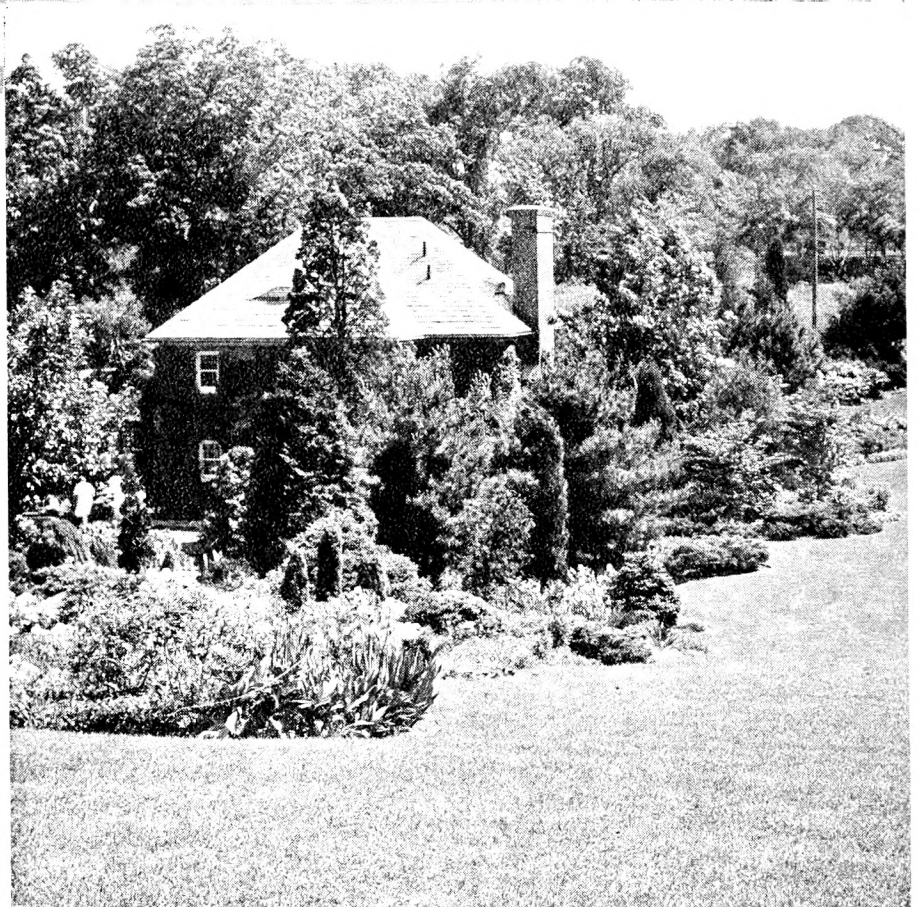
TIME TO PLANT

Plant Perennials from April 1 to June 1 and September 1 to November 15.

Plant Roses from March 15 to May 15 and October 15 to December 1.

Plant Peonies and Irises from September 1 to frost.

For late planting in the spring, we carry field-grown perennials and plants in pots.



Our Landscape Service designs pictures like these. Why not let us do one for you?

LANDSCAPE SERVICE

LET us work with you and help you with your planting problems. In order to produce artistic and lasting landscape effects, careful planning and proper use of plant material is necessary. Landseaping is the main part of our business, and every planting, whether it be large home-grounds or small, is given our personal attention.

Many fine homes and estates in Monmouth County and our prize-winning exhibits at the New York Flower Show every spring, reflect the type of landscape work that is done by our Nursery.

Grouped about these facing pages are views of plantings done by our Nursery, showing the complete line of landscape work we do every season.

We will gladly draw plans and submit estimates to fit your particular needs, whether it be for a complete treatment of the entire grounds, a foundation planting, a special planting, or revamping an old planting. This service is rendered free except where elaborate plans and special trips are necessary, in which case a small fee will be charged, which will be credited to our customer's account when the order is placed.

FOR APPOINTMENTS phone Long Branch 2587 or drop us a card and we will be glad to call on you to make suggestions or offer advice.

VISITORS are always welcome to come to our Nursery to see the best trees, shrubs, evergreens, roses, and perennials suited to this part of the country. New plant introductions are added as fast as their worth can be proved, so that we are building up a collection of plants which enables us to fill almost any order on short notice.

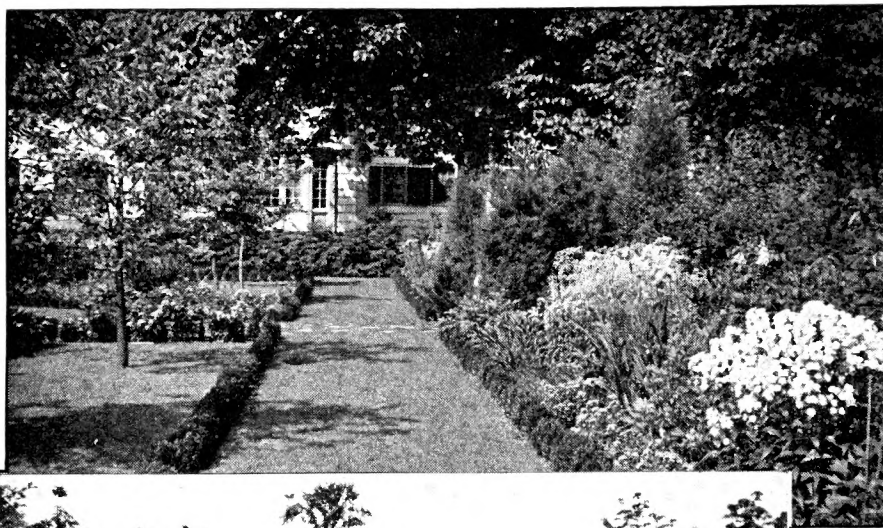
Keep your garden modern with tested novelties from our Nursery.

DELIVERY. Unless otherwise instructed, we will ship all orders to arrive at proper planting-time. Postage prepaid when cash accompanies order.

TERMS. If you desire to open a charge account, please send bank or trade references with order.

The three views at the bottom of this page show sections of gardens designed and planted by us.

These photographs, taken the first flowering season after the gardens were planted, show how an immediate effect can be obtained with properly planted and arranged material.





Because of the wide range of plant material raised at our Nursery our Landscape Department is able to produce unusual and interesting foundation plantings for you of various combinations

EVERGREENS

The planting of Evergreens about the home is one of the finest investments one can make. They increase in value and beauty each year as they grow into larger and finer specimens. There is nothing to equal the Evergreens for adding warmth, color, and background to the home and grounds.

We are always glad to submit estimates for landscaping on request.

The following prices are for exceptionally fine, bushy, well-shaped trees, dug with a generous amount of soil, and burlapped. You will find that our Evergreens measure well up to each size. Many of these varieties are fine for rockery work.

BIOTA aurea nana. *Golden Biota.* Lovely, compact plant with golden foliage. A popular slow-growing evergreen for foundation plantings.

Each	Each
9 to 12 in. . . . \$0 90	15 to 18 in. . . . \$1 50
12 to 15 in. . . . 1 20	1½ to 2 ft. 2 00

B. aurea conspicua. *Goldspire Arborvitæ.* Foliage golden yellow suffused with green.

Each	Each
1½ to 2 ft. . . . \$1 50	3 to 4 ft. \$3 00
2 to 3 ft. 2 00	4 to 5 ft. 4 00

B. elegantissima. *Yellow Column Arborvitæ.* A bright yellow form. Prices same as above.

CEDRUS atlantica glauca. *Blue Atlas Cedar.* A shapely tree with blue foliage.

Each	Each
6 to 7 ft. \$9 00	8 to 9 ft. \$15 00
7 to 8 ft. 12 00	

CRYPTOMERIA lobbii compacta. *Cave Cryptomeria.* An interesting, oddly formed tree of narrow pyramidal growth. A beautiful lawn specimen.

Each	Each
5 to 6 ft. \$5 00	8 to 10 ft. \$10 00
6 to 7 ft. 7 00	10 to 12 ft. 15 00

JUNIPERUS chinensis columnaris glauca. *Columnar Chinese Juniper.* Splendid narrow pyramidal evergreen.

Each	Each
3 to 4 ft. \$3 00	5 to 6 ft. \$5 00
4 to 5 ft. 4 00	6 to 8 ft. 7 00

J. chinensis pfitzeriana. *Pfitzer Juniper.* A spreading Juniper with gray-green foliage.

Each	Each
1½ to 2 ft. . . . \$2 00	3 to 4 ft. \$4 50
2 to 2½ ft. . . . 3 00	4 to 5 ft. 5 00
2½ to 3 ft. . . . 3 50	5 to 6 ft. 6 50

J. communis depressa. *Prostrate Juniper.* Low, spreading plant with gray-green foliage.

Each	Each
1½ to 2 ft. . . . \$1 75	2 to 2½ ft. \$2 50

J. communis hibernica. *Irish Juniper.* Narrow, erect columns of glaucous green.

Each	Each
2 to 2½ ft. . . . \$1 25	3 to 4 ft. \$2 50
2½ to 3 ft. . . . 1 75	

J. excelsa stricta. Slender, light gray-green columns.

Each	Each
12 to 15 in. . . . \$1 00	2½ to 3 ft. \$2 50
15 to 18 in. . . . 1 35	3 to 4 ft. 3 00
1½ to 2 ft. . . . 1 75	4 to 5 ft. 4 00
2 to 2½ ft. . . . 2 00	5 to 6 ft. 5 00

Juniperus squamata meyeri. *Meyer Juniper.* Upright shrub with bluish white foliage.

Each	Each
2 to 2½ ft. . . . \$3 00	3 to 4 ft. \$5 00
2½ to 3 ft. . . . 4 00	

J. virginiana. *Red Cedar.* The American Cedar familiar to all.

Each	Each
4 to 5 ft. \$4 00	8 to 10 ft. . . . \$10 00
5 to 6 ft. 5 00	10 to 12 ft. . . . 14 00
6 to 7 ft. 7 50	

J. virginiana burki. *Burk Juniper.* A dense, columnar tree.

Each	Each
2½ to 3 ft. . . . \$2 50	4 to 4½ ft. \$4 00
3 to 4 ft. 3 50	4½ to 5 ft. 5 00

J. virginiana canaerti. Pyramidal form with dark green leaves.

Each	Each
2½ to 3 ft. . . . \$3 00	4 to 5 ft. \$6 00
3 to 4 ft. 4 00	5 to 6 ft. 7 00

J. virginiana elegantissima. *Gold-tipped Red Cedar.* A slender tree with bright green foliage tipped yellow.

Each	Each
3 to 4 ft. \$3 75	4 to 5 ft. \$5 50

J. virginiana glauca. *Silver Red Cedar.* An interesting sport with silvery foliage.

Each	Each
3 to 4 ft. \$3 00	5 to 6 ft. \$5 50
4 to 5 ft. 4 00	

PICEA excelsa. *Norway Spruce.* Pyramidal trees with dark green needles.

Each	Each
4 to 5 ft. \$3 00	8 to 10 ft. \$8 50
5 to 6 ft. 5 00	10 to 12 ft. . . . 13 50
6 to 8 ft. 6 50	12 to 14 ft. . . . 18 00

P. pungens. *Colorado Spruce.* Imposing trees of symmetrical form.

Each	Each
2 to 2½ ft. . . . \$1 50	4 to 5 ft. \$4 00
2½ to 3 ft. . . . 2 00	5 to 6 ft. 6 00
3 to 4 ft. 3 00	6 to 8 ft. 8 00

P. pungens glauca. *Blue Colorado Spruce.*

Each	Each
3 to 4 ft. \$5 00	5 to 6 ft. \$10 00
4 to 5 ft. 7 00	6 to 8 ft. 15 00

Evergreen Collection

This Collection, which consists of a fine variety of color and formation, makes an attractive foundation planting, and is a most unusual bargain, considering size and variety of trees.

- | | |
|---|--|
| 2 Biota aurea nana. 9 to 12 in. | 2 Retinospora plumosa aurea. 2 to 2½ ft. |
| 2 Taxus cuspidata. 2 to 2½ ft. | 2 Retinospora squarrosa veitchi. 1½ to 2 ft. |
| 2 Thuja occidentalis elegantissima. 1½ to 2 ft. | 2 Thuja occidentalis pyramidalis. 2 to 3 ft. |

12 Trees, 6 Varieties, \$15.00

Planted, \$17.50

Picea pungens kosteri. *Koster's Blue Spruce.* Lighter, more silvery blue needles than others.
 Each Each
 2 to 2½ ft...\$4 00 | 4 to 5 ft.....\$10 00
 2½ to 3 ft... 5 50 | 5 to 6 ft.....15 00
 3 to 3½ ft... 7 00 | 6 to 8 ft.....18 00
 3½ to 4 ft... 8 00 |

PINUS austriaca. *Austrian Pine.* Tall tree with broad head.
 Each Each
 5 to 6 ft.....\$6 50 | 8 to 10 ft.....\$15 00
 6 to 8 ft..... 8 50 | 10 to 12 ft..... 20 00

P. montana mughus. *Mugho Pine.* Dwarf, low-spreading evergreen shrub.
 Each Each
 1½ to 2 ft...\$1 50 | 2½ to 3 ft.....\$3 50
 2 to 2½ ft... 2 50 | 3 to 3½ ft..... 4 00

P. strobus. *White Pine.* A grand tree with grayish green needles.
 Each Each
 6 to 8 ft....\$8 00 | 14 to 16 ft....\$18 00
 8 to 10 ft....10 00 | 16 to 18 ft.... 25 00

PSEUDOTSUGA douglasi. *Douglas Fir.* One of the finest evergreen trees.
 Each Each
 4 to 5 ft.....\$3 00 | 8 to 10 ft.....\$8 50
 5 to 6 ft..... 5 00 | 10 to 12 ft.....13 50
 6 to 8 ft..... 6 50 |

RETINOSPORA filifera. *Thread Cypress.* Bright green, thread-like drooping branches.
 Each Each
 1½ to 2 ft...\$1 00 | 2½ to 3 ft.....\$2 00
 2 to 2½ ft... 1 50 |

R. filifera aurea. *Goldenthrad Cypress.* Golden variety of above.
 Each Each
 1½ to 2 ft...\$2 50 | 2½ to 3 ft.....\$4 50
 2 to 2½ ft... 3 50 | 3 to 4 ft..... 5 50

R. obtusa crispis. *Cripps Golden Cypress.* A variation with pale yellow foliage.
 Each Each
 15 to 18 in...\$1 50 | 2 to 2½ ft.....\$3 00
 1½ to 2 ft... 2 50 | 2½ to 3 ft..... 3 50

R. obtusa gracilis. *Slender Hinoki Cypress.* A pyramidal form with dark foliage.
 Each Each
 2½ to 3 ft...\$3 00 | 4 to 5 ft.....\$7 00
 3 to 4 ft..... 5 00 | 5 to 6 ft..... 8 50

R. obtusa nana. *Dwarf Hinoki Cypress.* A very dwarf form.
 Each Each
 9 to 12 in...\$1 50 | 15 to 18 in.....\$3 00
 12 to 15 in... 2 00 | 18 to 24 in..... 4 00

Retinospora pisifera. *Sawara Cypress.* Pyramidal; laey, light green foliage.
 Each Each
 2 to 2½ ft...\$1 50 | 4 to 5 ft.....\$3 50
 2½ to 3 ft... 2 00 | 5 to 6 ft..... 5 00
 3 to 4 ft... 2 50 |

R. pisifera aurea. *Golden Sawara Cypress.* Golden variety of above. Prices same as above.
 Each Each
 2 to 2½ ft...\$1 50 | 3 to 4 ft.....\$2 50
 2 to 2½ ft...\$1 50 | 4 to 5 ft..... 3 50
 2½ to 3 ft... 2 00 | 5 to 6 ft..... 5 00

R. plumosa aurea. *Golden Plume Cypress.* Golden form of above. Prices same as above.
 Each Each
 2 to 2½ ft...\$1 50 | 3 to 4 ft.....\$2 50
 2½ to 3 ft... 2 00 | 4 to 5 ft..... 3 50
 2½ to 3 ft... 2 00 | 5 to 6 ft..... 5 00

R. squarrosa veitchi. *Moss Cypress.* Dense, graceful, silvery blue foliage. Prices same as above.
 Each Each
 1½ to 2 ft...\$2 25 | 3 to 3½ ft.....\$6 50
 2 to 2½ ft... 2 75 | 3½ to 4 ft.....10 00
 2½ to 3 ft... 4 00 |

TAXUS baccata repandens. *Spreading English Yew.* A nearly prostrate Yew with bluish green foliage.
 Each Each
 15 to 18 in...\$1 50 | 2½ to 3 ft.....\$3 00
 1½ to 2 ft... 2 00 |

T. cuspidata. *Japanese Yew.* One of the finest evergreens.
 Each Each
 1½ to 2 ft...\$2 25 | 3 to 3½ ft.....\$6 50
 2 to 2½ ft... 2 75 | 3½ to 4 ft.....10 00
 2½ to 3 ft... 4 00 |

T. cuspidata capitata. *Treeform Japanese Yew.* Upright form. Very fine.
 Each Each
 1½ to 2 ft...\$2 00 | 4 to 4½ ft.....\$8 50
 2 to 2½ ft... 2 50 | 4½ to 5 ft.....10 00
 2½ to 3 ft... 3 50 | 5 to 6 ft.....15 00
 3 to 3½ ft... 5 00 | 6 to 7 ft.....20 00
 3½ to 4 ft... 6 50 |

T. cuspidata brevifolia. *Dwarf Japanese Yew.* Dwarf, shrubby form of Japanese Yew.
 Each Each
 9 to 12 in...\$1 00 | 1½ to 2 ft.....\$3 50
 12 to 15 in... 1 65 | 2 to 2½ ft..... 5 75
 15 to 18 in... 2 25 | 2½ to 3 ft..... 8 00

T. media hicksi. *Hicks Yew.* An upright, close-growing Yew with rich, dark foliage.
 Each Each
 1½ to 2 ft...\$2 00 | 3 to 3½ ft.....\$7 00
 2 to 2½ ft... 3 00 | 3½ to 4 ft..... 9 00
 2½ to 3 ft... 5 00 |

THUJA occidentalis. *American Arborvitae.* Splendid hedge-plant or specimen tree.
 Each Each
 2 to 3 ft...\$1 25 | 5 to 6 ft.....\$3 50
 3 to 4 ft... 1 75 | 6 to 8 ft..... 6 00
 4 to 5 ft... 2 25 |

Thuja occidentalis elegantissima. *Golden-tipped Arborvitae.* A pyramidal form, the spring foliage tipped with gold.
 Each Each
 2½ to 3 ft...\$1 50 | 4 to 5 ft.....\$2 50
 3 to 4 ft... 2 00 |

T. occidentalis hoveyi. *Hovey Arborvitae.* Globe-shaped. Globular form with light green foliage.
 Each Each
 12 to 15 in...\$1 00 | 2 to 2½ ft.....\$2 25
 15 to 18 in... 1 35 | 2½ to 3 ft..... 3 00
 1½ to 2 ft... 1 50 |

T. occidentalis lutea. *George Peabody Arborvitae.* Yellow. A pyramid of glistening gold.
 Each Each
 2 to 2½ ft...\$1 00 | 3 to 4 ft.....\$2 50
 2½ to 3 ft... 1 50 | 4 to 5 ft..... 3 00

T. occidentalis pyramidalis. *Pyramidal Arborvitae.* Pointed dark green columns.
 Each Each
 2 to 2½ ft...\$1 50 | 4 to 5 ft.....\$3 50
 2½ to 3 ft... 2 00 | 5 to 6 ft..... 4 00
 3 to 4 ft... 2 75 | 6 to 8 ft..... 6 50

T. occidentalis rosenthalii. *Rosenthal Arborvitae.* Dark, lustrous green foliage. Columnar growth.
 Each Each
 2 to 2½ ft...\$2 00 | 3½ to 4 ft.....\$3 50
 2½ to 3 ft... 2 50 | 4 to 5 ft..... 4 50
 3 to 3½ ft... 3 00 |

T. occidentalis spiralis. *Spiral Arborvitae.* Branches appear spirally arranged.
 Each Each
 2 to 2½ ft...\$1 50 | 3 to 4 ft.....\$3 00
 2½ to 3 ft... 2 00 | 4 to 5 ft..... 4 00

TSUGA canadensis. *Canadian Hemlock.* Upright tree with spreading, pendulous branches.
 Each Each
 2 to 2½ ft...\$1 50 | 4 to 5 ft.....\$4 50
 2½ to 3 ft... 2 25 | 5 to 6 ft..... 7 50
 3 to 4 ft... 3 50 | 6 to 8 ft..... 9 50

T. canadensis pendula. *Sargent Weeping Hemlock.* One of the most beautiful of evergreens. Indispensable.
 Each Each
 2½ to 3 ft...\$7 50 | 3 to 4 ft.....\$9 00

T. caroliniana. *Carolina Hemlock.* A beautiful tree with glossy foliage.
 Each Each
 2 to 2½ ft...\$2 00 | 3½ to 4 ft.....\$4 00
 2½ to 3 ft... 3 00 | 4 to 5 ft..... 5 00
 3 to 3½ ft... 3 50 |



We grow a complete line of choice varieties of evergreens as illustrated above. Let us submit a plan and estimate for any type of planting you have in mind



Our Landscape Department will be glad to submit plans and estimates for special plantings such as above

DECIDUOUS AND EVERGREEN FLOWERING SHRUBS

ABELIA grandiflora. *Glossy Abelia.* Broad-leaved evergreen with pink flowers all summer. Needs winter protection north of Trenton. 6 to 8 ft. Each Doz.
 1½ to 2 ft. . . . \$0 75 | 3 to 4 ft. . . . \$1 50
 2 to 3 ft. . . . 1 00 |

ALTHÆA, Rose of Sharon, Separate Colors. Erect; dark glossy foliage. Aug., Sept.
 Each Doz.
 3 to 4 ft. . . . \$0 50 \$5 00
 4 to 5 ft. . . . 75 7 50

ARONIA arbutifolia. The red Chokeberry is a fine shrub with showy light flowers and red fruit. Each Each
 1½ to 2 ft. . . \$0 50 | 2 to 3 ft. . . . \$0 75

A. melanocarpa. The black Chokeberry is a 4-foot shrub with showy flowers and black fruit. Each Each
 1½ to 2 ft. . . \$0 50 | 2 to 3 ft. . . . \$0 75

AZALEA amœna. A dense, dwarf, evergreen shrub that is completely covered with cheerful, rosy purple flowers. Each Each
 12 to 15-in. spread. . . . \$1 50
 15 to 18-in. spread. . . . 1 90

A. calendulacea. *Flame Azalea.* Brilliant red. Each Each
 1½ to 2-ft. spread. . . . \$2 50
 2 to 3-ft. spread. . . . 3 50
 3 to 4-ft. spread. . . . 4 50

A. indica alba. *Snow Azalea.* Low-growing, dense plants, with large, fragrant white flowers in profusion in spring. Each Each
 15 to 18 in. . . \$2 50 | 2 to 2½ ft. . . . \$3 50
 18 to 24 in. . . 3 00 | 2½ to 3 ft. . . . 4 50

A. hinodegiri. The most popular of all Azaleas. Bright carmine. Beautiful evergreen foliage. Each Each
 6 to 8-in. spread. . . . \$0 75
 8 to 10-in. spread. . . . 90
 10 to 12-in. spread. . . . 1 25
 12 to 15-in. spread. . . . 1 75
 15 to 18-in. spread. . . . 2 25
 1½ to 2-ft. spread. . . . 3 00
 2 to 2½-ft. spread. . . . 4 50

A. kaempferi. Large, beautiful, fire-red flowers. Tall and bushy. Each Each
 15 to 18-in. spread. . . . \$2 00
 1½ to 2-ft. spread. . . . 2 75
 2 to 2½-ft. spread. . . . 3 50

A. ledifolia magnifica. *Blush Azalea.* Six-foot shrubs with 3-inch, fragrant blush-white blooms in May. Each Each
 15 to 18 in. . . \$2 50 | 2 to 2½ ft. . . . \$3 50
 1½ to 2 ft. . . 3 00 | 2½ to 3 ft. . . . 4 00

Azalea macrantha. Large, single, salmon-red; very late. Dark green foliage. Each Each
 12 to 15-in. spread. . . . \$2 00
 15 to 18-in. spread. . . . 2 75

A. mollis. Colors mixed yellow to red. Very large flowers. Deciduous. Each Each
 15 to 18-in. spread. . . . \$2 00
 1½ to 2-ft. spread. . . . 3 50

A. mucronulatum. Early flowering; deciduous. Lavender and soft pink tone. Tall growing. Each Each
 1½ to 2 ft. . . \$3 50 | 2 to 2½ ft. . . . \$4 50

A. schlippenbachi. A large deciduous shrub with broad funnels of pink, spotted with brown. Each Each
 12 to 15 in. . . \$2 00 | 1½ to 2 ft. . . . \$3 00
 15 to 18 in. . . 2 50 | 2 to 2½ ft. . . . 3 50

A. viscosa. *Swamp Azalea.* This native grows to 10 feet, with fragrant, 2-inch, funnel-formed, white flowers in June and July. Each Each
 15 to 18 in. . . \$2 00 | 2 to 2½ ft. . . . \$3 50
 1½ to 2 ft. . . 2 50 |

A. yodogawa. Large, double, fragrant, lavender-purple flowers. An attractive variety. Each Each
 15 to 18 in. . . \$2 00 | 2 to 2½ ft. . . . \$3 00
 1½ to 2 ft. . . 2 50 | 2½ to 3 ft. . . . 4 00

KURUME AZALEAS.

Benigiri. Bright red.
Cherry Blossom. Light pink.
Coral Bells. Coral-pink.
Exquisite. Salmon-pink, white throat.
Flame. Brilliant red and copper.
Hinamoyo. Clear pink.
Mauve Beauty. Mauve.
Peach Glow. Peach-blossom-pink.
Pink Pearl. Salmon-rose.
Salmon Beauty. Salmon-pink.
Snow. White.
Vesuvius. Salmon-red.
 All Kurume Azaleas: 8 to 10 in., \$1.75 each; 12 to 15 in., \$2; 15 to 18 in., \$2.50; 1½ to 2 ft., \$3.50; 2 to 2½ ft., \$4

BENZOIN æstivale. *Spicebush.* A 15-foot shrub with small greenish yellow flowers in early spring before the leaves. Scarlet fruit. 4 to 5 ft., 75 cts. each, \$7.50 per doz.

BERBERIS julianæ. A rare evergreen variety; very hardy. Leaf is broad and very glossy. Each Each
 1½ to 2 ft. . . \$1 50 | 3 to 3½ ft. . . . \$3 50
 2 to 2½ ft. . . 2 00 | 3½ to 4 ft. . . . 4 00
 2½ to 3 ft. . . 2 50 |

Berberis thunbergii. Green foliage turning different shades of red in fall. Extra-bushy plants dug fresh from our nursery. Doz. 100 1000
 15 to 18 in. . . . \$2 00 \$12 00 \$90 00
 1½ to 2 ft. . . . 2 50 17 50 135 00
 2 to 2½ ft. . . . 3 50 25 00 200 00

B. thunbergii atropurpurea. *Red-leaf Barberry.* Carries very attractive red foliage throughout entire summer. Strong, bushy plants. Each Doz. 100
 15 to 18 in. . . . \$0 40 \$4 00 \$27 50
 1½ to 2 ft. . . . 45 4 50 35 00
 2 to 2½ ft. . . . 60 6 00 45 00

BUDDLEIA, Charming. *New.* A quick-growing Butterfly Bush with lovely lavender-pink flowers. 75 cts. each, \$7.50 per doz.

B. farquhari. Pale pink flowers. Strong plants.
B., Ile de France. Brilliant rosy violet-purple.
B. variabilis magnifica. Violet-mauve flowers on long spikes. Strong plants.

All Buddleias, except where noted, 60 cts. each, \$6 per doz.

BUXUS suffruticosa. *Old English Boxwood.* A very dwarf and slow-growing Boxwood. Fine for edgings when small. Doz. 100 1000
 4 to 6 in. . . . \$2 50 \$15 00 \$125 00
 6 to 8 in. . . . 4 00 25 00 225 00
 8 to 10 in. . . . 8 50 60 00 550 00
 10 to 12 in. . . . 12 00 85 00 750 00
 12 to 15 in. . . . 17 50 115 00 1000 00
 Ask for quotations on large specimen Boxwood.

CALLICARPA americana. A shrub to 6 feet with bluish flowers from May to July, followed by violet fruit. Each Each
 2 to 3 ft. . . . \$0 60 | 3 to 4 ft. . . . \$0 75

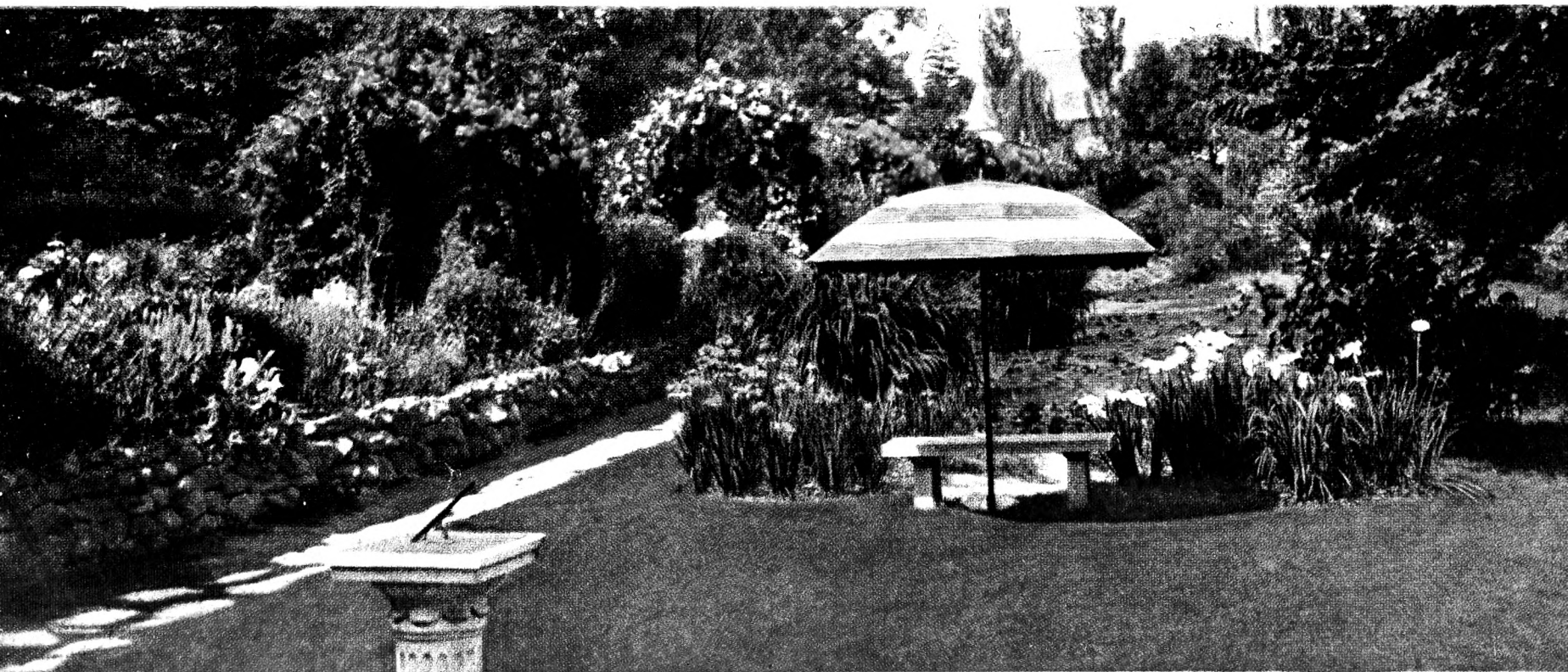
CLETHRA alnifolia. *Summersweet.* Attractive shrub with slender, erect stems tipped with tassels of fragrant flowers in midsummer. Each Each
 1½ to 2 ft. . . \$0 40 | 2½ to 3 ft. . . . \$0 75
 2 to 2½ ft. . . 50 |

CORNUS sanguinea. *Red-barked Dogwood.* Green foliage. White flowers in clusters. Each Doz.
 2 to 3 ft. . . . \$0 40 \$4 00
 3 to 4 ft. . . . 60 6 00
 4 to 5 ft. . . . 75 7 50

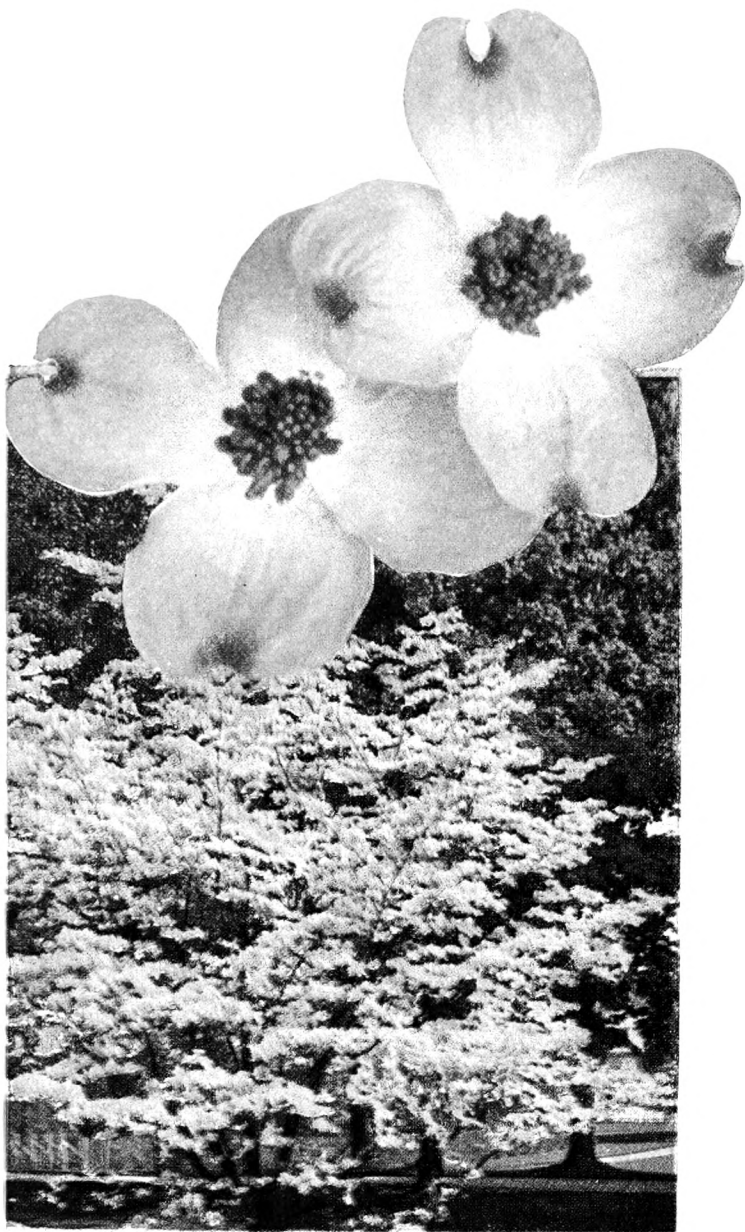
COTONEASTER horizontalis. A dwarf evergreen shrub; trailing habit, covered with berries. Each Each
 15 to 18-in. spread. . . . \$1 75
 1½ to 2-ft. spread. . . . 2 25



Where Peace and Beauty Dwell Together



A Summer Day in a Turner Garden



PINK-FLOWERING DOGWOOD

As a lawn specimen it is unsurpassed and a few trees among a planting of White Dogwoods add greatly to the picture.

For sizes and prices, see page 10



FLOWERING CHERRY

The beauty of the Washington Japanese Cherries can be brought to your home by planting choice varieties from our collection. For descriptions and prices, see page 10.

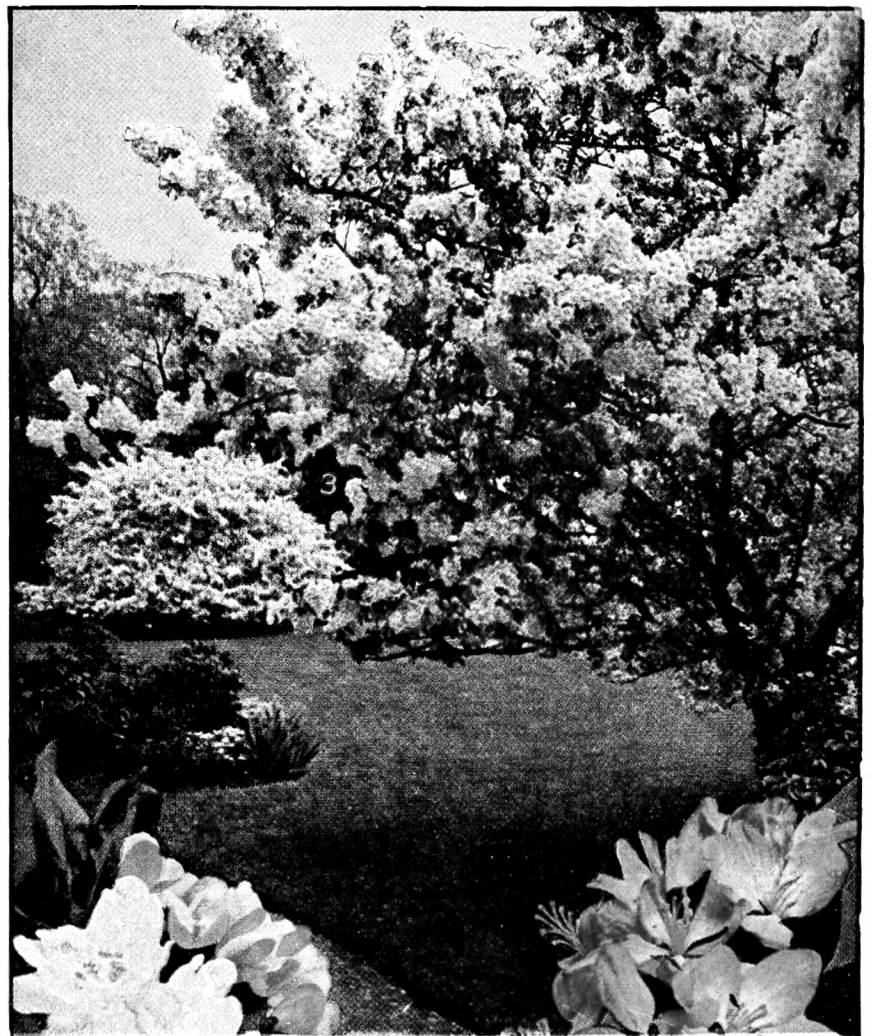
FLOWERING trees not only bring beauty to the home-grounds but add considerably to the monetary value of the property.



MAGNOLIA SOULANGEANA

Shapely small trees which literally cover themselves with large, saucer-shaped, fragrant flowers before the leaves appear in spring. Having beautiful shiny foliage and light-colored bark, it is an attractive tree at all times.

For sizes and prices, see page 10



FLOWERING CRAB

The Flowering Crabs give two periods of unusual beauty in addition to the all-year beauty most of us find in an apple tree. The spring bloom is something we all look forward to, and then the richly colored fruit decorates the trees for a long time before the birds finally dispose of the last little apple.

For descriptions and prices, see page 10

CYDONIA japonica. *Flowering Quince.* Large, scarlet flowers in May and June. 4 to 5 ft.
 Each Doz.
 1½ to 2 ft....\$0 50 | 2 to 3 ft.....\$0 75

DAPHNE cneorum. A dwarf, bushy plant with half-prostrate, wiry stems, each tipped with dense clusters of fragrant rose-pink flowers.
 Each Doz.
 9 to 12 in....\$0 75 | 15 to 18 in.....\$2 00
 12 to 15 in.... 1 30

DEUTZIA crenata fl.-pl. Tall shrub with double pinkish flowers in June. Each Doz.
 3 to 4 ft.....\$0 50 \$5 00
 4 to 5 ft..... 75 7 50
 5 to 6 ft..... 1 00 10 00

D. gracilis. Slender, willowy little shrub with dense clusters of pure white flowers.
 Each Doz.
 12 to 15 in....\$0 40 | 15 to 18 in.....\$0 50

D. gracilis rosea. A rather small shrub with pink, bell-shaped flowers in sprays in early summer. Each Doz.
 12 to 15 in....\$0 40 \$4 00
 15 to 18 in..... 50 5 00

D. lemoinei. Pure white flowers in broad panicles in June.
 Each Doz.
 2 to 2½ ft.....\$0 60 \$6 00
 2½ to 3 ft..... 75 7 50

D., Pride of Rochester. A vigorous grower with large, double white flowers, tinged pink.
 Each Doz.
 3 to 4 ft....\$0 50 | 5 to 6 ft.....\$1 00
 4 to 5 ft..... 75

ELÆAGNUS angustifolia. Foliage silvery underneath. Blooms in June, followed by yellow fruit. Each Doz.
 3 to 4 ft....\$0 50 | 4 to 5 ft.....\$0 75

EUONYMUS alatus. *Winged Euonymus.* An 8-foot shrub with foliage that turns brilliant scarlet and orange in autumn. Branches have corky wings on the bark.
 Each Doz.
 3 to 4 ft....\$0 75 | 5 to 6 ft.....\$1 25
 4 to 5 ft..... 1 00

FORSYTHIA spectabilis. Strong, tall-growing; large golden yellow flowers. Very early.

F. suspensa. Weeping variety.
 Either variety, 3 to 4 ft., 50 cts. each; 4 to 5 ft., 75 cts. each, \$7.50 per doz.; 5 to 6 ft., \$1 each

HYDRANGEA arborescens grandiflora. Erect shrub, producing large, round heads of white flowers. June-Aug.

H. paniculata grandiflora. Large heads of white flowers changing to bronze in fall.
 Each Doz.
 1½ to 2 ft.....\$0 45 \$4 50
 2 to 3 ft..... 65 6 50

H. hortensis. *Blue Hydrangea.* Great heads of blue flowers freely produced in June and July. Field-grown clumps, \$3 and \$4.50 each.

ILEX crenata. *Japanese Holly.* Hardy evergreen with dark, glossy foliage and black, shining berries. An excellent Holly for hedges.
 Each Doz.
 12 to 15 in....\$1 00 | 2 to 2½ ft.....\$2 50
 15 to 18 in.... 1 50 | 2 to 3 ft..... 3 00
 1½ to 2 ft.... 2 00

I. opaca. *American Holly.* Evergreen tree with foliage armed with large spines. Masses of dull red berries. Beautiful.
 Each Doz.
 2 to 3 ft.....\$3 50 | 4 to 5 ft.....\$6 50
 3 to 4 ft..... 5 00 | 5 to 6 ft..... 8 50

KALMIA latifolia. *Mountain Laurel.* Our most beautiful broad-leaved native evergreen, which bears large clusters of delightful pink flowers in June. Best results in a shady spot.
 Each Doz.
 5 to 6 ft. Each Doz.
 1 to 1½ ft....\$1 50 | 2 to 3 ft.....\$2 50
 1½ to 2 ft.... 2 00 | 3 to 3½ ft..... 4 00

KERRIA japonica. Shrub with nicely cut leaves and abundance of yellow flowers. June-Oct. 2 to 3 ft., 75 cts. each, \$7.50 per doz.

KOLKWTZIA amabilis. *Beauty-Bush.* Early May finds them a mass of beautiful pink flowers, similar to weigelas but finer in every way.
 Each Doz.
 1½ to 2 ft....\$0 60 | 3 to 4 ft.....\$1 00
 2 to 3 ft..... 75

LEUCOTHOE catesbæi. *Drooping Leucothoe.* An evergreen shrub, 3 to 4 feet high, with handsome white flowers in May.
 Each Doz.
 1 to 1½ ft....\$1 25 | 2 to 2½ ft.....\$2 50
 1½ to 2 ft.... 1 75

LIGUSTRUM ovalifolium. *California Privet.*
 Doz. 100 1000
 1 to 1½ ft.....\$0 50 \$3 50 \$25 00
 1½ to 2 ft..... 75 4 50 35 00
 2 to 3 ft..... 1 00 6 00 50 00
 3 to 4 ft..... 1 50 12 50 80 00

LONICERA morrowi. A wide-spreading shrub with white flowers turning yellow, and red fruit. Each Doz.
 3 to 4 ft....\$0 50 | 4 to 5 ft.....\$0 75

L. tatarica. Erect-growing Honeysuckle.
 Each Doz.
 3 to 4 ft.....\$0 50 \$5 00
 4 to 5 ft..... 75 7 50
 5 to 6 ft..... 1 00 10 00

MAHONIA aquifolium. *Oregon Hollyhoge.* A 3-foot shrub with spiny, holly-like foliage which turns bronzy red in autumn.
 Each Doz.
 2 to 2½ ft....\$2 50 | 2½ to 3 ft.....\$3 50

PHILADELPHUS grandiflorus. *Mock Orange.* Upright habit. Produces abundance of white, fragrant flowers in June. Each Doz.
 3 to 4 ft.....\$0 50 \$5 00
 4 to 5 ft..... 75 7 50
 5 to 6 ft..... 1 00 10 00

P. virginialis. *Virginal Mock Orange.* Large flowers of snowy whiteness cover the plants in May and June. Each Doz.
 3 to 4 ft....\$0 75 | 5 to 6 ft.....\$1 50
 4 to 5 ft..... 1 00

PIERIS japonica. *Japanese Andromeda.* Evergreen. Grows best in partial shade and damp ground. Clusters of white flowers in May.
 Each Doz.
 5 to 6 ft. Each Doz.
 1 to 1½ ft....\$2 00 | 2 to 2½ ft.....\$3 25
 1½ to 2 ft.... 2 50 | 2½ to 3 ft..... 4 00

PRUNUS glandulosa. *Flowering Almond.* Shrub 3 to 5 feet high with white flowers followed by small red fruits. Each Doz.
 1½ to 2 ft.....\$0 50 \$5 00
 2 to 3 ft..... 75 7 50

P. pissardi. *Purple-leaf Plum.* Handsome purple leaves throughout entire summer.
 Each Doz.
 3 to 4 ft....\$1 00 | 4 to 5 ft.....\$1 50

PYRACANTHA coccinea lalandi. An informal shrub to 6 feet high with white flowers followed by masses of orange-red fruit loved by birds. Each Doz.
 1½ to 2 ft.....\$1 75 \$17 50
 2 to 3 ft..... 2 25 22 50
 Extra-large specimens...\$5 to 7 50

RHODODENDRON. Large flowers varying from white to reddish purple. We are glad to submit quotations on carload lots. In small quantities we offer:

R. carolinianum. Plants to 6 feet with heads of flowers pale rose to white. Blooms in May and June. Each Doz.
 2 to 3 ft....\$2 50 | 3 to 3½ ft.....\$3 50

R. catawbiense. Six-foot plants covered with clusters of bright purple-pink flowers in early summer. Each Doz.
 1½ to 2 ft....\$2 50 | 3 to 4 ft.....\$4 50
 2 to 3 ft..... 3 50

R. maximum. The largest and finest of the native species. Good in dense shade. Light pink flowers. Each Doz.
 2 to 2½ ft....\$2 50 | 3 to 4 ft.....\$3 50
 2½ to 3 ft.... 3 00 | 4 to 5 ft..... 4 50

Rhododendron Hybrids. Handsome broad-leaved evergreens, easy to grow, and giving grand bursts of bloom. Foliage is attractive in winter. Named varieties in separate colors.
 Each Doz.
 15 to 18 in....\$3 50 | 2 to 2½ ft.....\$6 50
 1½ to 2 ft.... 4 50 | 2½ to 3 ft..... 8 50

Write for prices on larger quantities

SPIRÆA, Anthony Waterer. Full, flat clusters of brilliant purple-erimson flowers. 2 ft. June, July. Each Doz.
 1½ to 2 ft.....\$0 40 \$4 00
 2 to 2½ ft..... 65 6 00

S. billiardi. Graceful shrub to 6 feet, with bright pink flowers in panicles. July, Aug.
 Each Doz.
 1½ to 2 ft.....\$0 40 \$4 00
 2 to 3 ft..... 65 6 50

Spiræa thunbergi. Graceful plants with delicate foliage and small white flowers in spring.
 Each Doz.
 2 to 2½ ft....\$0 40 | 2½ to 3 ft.....\$0 60

S. trichocarpa. *Korean Bridal Wreath.* White flowers in June. 5 to 6 ft.
 Each Doz.
 2 to 3 ft.....\$0 40 | 3 to 4 ft.....\$0 50

S. vanhouttei. The bush is entirely covered with a blanket of white flowers. Each Doz.
 3 to 4 ft.....\$0 50 \$5 00
 4 to 5 ft..... 75 7 50
 5 to 6 ft..... 1 00 10 00

STEPHANANDRA flexuosa. A low shrub, with attractive, deeply cut and fringed leaves and creamy white flowers.
 Each Doz.
 3 to 4 ft....\$0 50 | 4 to 5 ft.....\$0 75

SYMPHORICARPOS chenaulti. Quite similar to *S. vulgaris* but with more spectacular fruit. Each Doz.
 2 to 3 ft....\$0 50 | 3 to 4 ft.....\$0 75

S. racemosus. *Snowberry.* Small pink flowers in July and August, followed by wax-like berries. Each Doz.
 2 to 3 ft....\$0 50 | 3 to 4 ft.....\$0 75

S. vulgaris. Low shrub with slender branches covered in autumn with red fruit.
 Each Doz.
 2 to 3 ft....\$0 50 | 3 to 4 ft.....\$0 75

SYRINGA, HYBRID LILACS.
Charles Joly. Double; bright purple-erimson.
Charles X. Single; reddish purple.
Glory of Horstenstein. Single; reddish purple.
Katherine Havemeyer. Double; mauve.
Ludwig Spaeth. Single; purple.
Marie Legraye. Single; white.
Mme. Lemoine. Double; snow-white.
Mrs. Edward Harding. Double; bright carmine.
Pres. Grevy. Double; soft violet-blue.

All Hybrid Lilacs, 2 to 3 ft., 95 cts. each, \$9.50 per doz.; 3 to 4 ft., \$1.50 each, \$15 per doz.

Syringa villosa. Shrub to 10 feet, with huge panicles of lilac or pinkish white flowers. Very hardy and very late blooming.
 Each Doz.
 3 to 4 ft.....\$0 75 \$7 50
 4 to 5 ft..... 1 00 10 00

S. vulgaris. The old common Lilac with fragrant lilac-colored flowers in large panicles.
 Each Doz.
 3 to 4 ft.....\$0 75 \$7 50
 4 to 5 ft..... 1 00 10 00

VIBURNUM americanum. Tall plant with large clusters of bright red berries.
 Each Doz.
 2 to 3 ft.....\$0 50 \$5 00
 3 to 4 ft..... 75 7 50
 4 to 5 ft..... 1 00

V. carlesii. Semi-dwarf shrub with clusters of fragrant white flowers shaded pink.
 Each Doz.
 1½ to 2 ft....\$1 50 | 3 to 4 ft.....\$3 00
 2 to 3 ft.... 2 50

V. dentatum. A handsome shrub with conspicuous flowers followed by blue-black fruit.
 Each Doz.
 3 to 4 ft....\$0 65 | 4 to 5 ft.....\$0 85

V. lentago. A large shrub or small tree with attractive flowers and blue-black fruit with heavy bloom. Each Doz.
 3 to 4 ft....\$0 75 | 5 to 6 ft.....\$1 25
 4 to 5 ft..... 1 00

V. opulus. Strong growth; spreading habit; white flowers. Each Doz.
 3 to 4 ft.....\$0 75 \$7 50
 4 to 5 ft..... 1 00 10 00

V. plicatum. *Japanese Snowball.* Upright habit. Attractive foliage. Bears dense, ball-like clusters of pure white flowers. Each Doz.
 2 to 3 ft.....\$0 75 \$7 50
 3 to 4 ft..... 1 00

WEIGELA candida. White. Each Doz.
 3 to 4 ft.....\$0 50 \$5 00
 4 to 5 ft..... 75 7 50
 5 to 6 ft..... 1 00 10 00

W. rosea. Rose-pink, bell-like flowers. Prices same as *W. candida*.

W., Eva Rathke. Deep garnet-red flowers.
 Each Doz.
 1½ to 2 ft.....\$0 50 \$5 00
 2 to 3 ft..... 75 7 50

DWARF, FLOWERING AND SHADE TREES

DWARF AND FLOWERING

- ACER palmatum atropurpureum.** *Japanese Bloodleaf Maple.* Dwarf tree with blood-red foliage. Each Each
 1½ to 2 ft. \$2 00 | 4 to 5 ft. \$6 00
 2 to 3 ft. 3 50 | 5 to 6 ft. 8 50
 3 to 4 ft. 5 00 | 6 to 7 ft. 10 00
- A. palmatum dissectum atropurpureum.** *Purple Cutleaf Maple.* Dwarf trees with unusually attractive, finely cut foliage of deep blood-red. Makes a splendid lawn specimen. Each Each
 1½ to 2 ft. \$4 50 | 2½ to 3 ft. \$8 50
 2 to 2½ ft. 7 50 | 3 to 3½ ft. 10 00
- CERCIS canadensis.** *American Redbud; Judas Tree.* A fine shrub. Very spectacular when in bloom as its rosy pink flowers literally cover the branches before the leaves appear. Each Each
 3 to 4 ft. \$0 85 | 5 to 6 ft. \$2 50
 4 to 5 ft. 1 00 | 6 to 8 ft. 3 00
- CORNUS florida.** *White Dogwood.* Large, white, spectacular flowers in spring. Red berries in autumn. Each Each
 5 to 6 ft. \$3 50 | 9 to 10 ft. \$12 50
 6 to 8 ft. 5 00 | 10 to 12 ft.
 8 to 9 ft. 9 00 | \$15 to 25 00
 Exceptionally fine specimens from \$50 to \$75.
- C. florida rubra.** *Pink-flowering Dogwood.* A pink-flowering form of the above. Very desirable. Each Each
 4 to 5 ft. \$4 00 | 6 to 8 ft. \$8 00
 5 to 6 ft. 5 50 | 8 to 10 ft. 10 50
- C. kousa.** White flowers in June. Dense heads of flowers surrounded by creamy white bracts. 5 to 6 ft. \$3 50 | 8 to 10 ft. \$7 50
- CRATAEGUS oxyacantha alba.** A white-flowered variety of English Hawthorn with bright red fruit. 6 to 8 ft., \$4.50 to \$6 each.
- C. oxyacantha pauli.** *Paul's Scarlet Hawthorn.* Double scarlet flowers on a lovely, small tree. 6 to 8 ft., \$4.50 to \$6 each.
- C. oxyacantha rosea.** Pink-flowering form of above. 6 to 8 ft., \$4.50 to \$6 each.
- MAGNOLIA soulangeana.** *Sauceur Magnolia.* Best of all Magnolias. It is completely covered with purple, pink and white blooms in May. Each Each
 3 to 4 ft. \$4 00 | 5 to 6 ft. \$7 00
 4 to 5 ft. 6 00 | 6 to 7 ft. 8 50
- M. stellata.** *Star Magnolia.* Pure white, starry flowers adorn branches in early spring; highly perfumed. Each Each
 1½ to 2 ft. \$3 00 | 2 to 3 ft. \$4 00
- MALUS.** *Flowering Crab.*
M. atrosanguinea. Single; red.
M. eleyi. Red-leaved Crab.
M. floribunda. Single; rose-pink.
M. spectabilis. Double; pink.
M. ioensis plena. *Bechtel Crab.* Double; pink.
 All Flowering Crabs, 6 to 7 ft., \$4.50; 7 to 8 ft., \$6.50
 Specimens in above sizes, \$9 to \$18 each

The Flowering Cherries

- PRUNUS.** *Flowering Cherry.*
P., Amanogawa. Semi-double flowers of light pink. A fine variety.
P., Beni Higari. Single, light pink flowers completely covering the tree.
P., Fugenzo (Kofugen). Double flowers of deep pink.
P., J. H. Veitch. Double; deep pink.
P., Kwanzan. Deep pink, double flowers.
P., Mt. Fuji. Double; pure white.
P., Naden. Late-flowering; double, pink blooms.
P., Yoshino. Fragrant; single; pure white.
 Above Prunus, 6 to 7 ft., \$4.50; 7 to 8 ft., \$6.50
 Specimens in above sizes, \$9 to \$18 each
- P. subhirtella pendula.** *Weeping Cherry.* Light pink flowers on tree with drooping branches sweeping the ground.
P. subhirtella flore-plena. *Double-flowering Cherry.*
 Both of above Prunus: Each
 5 to 6-ft. stems, 2-yr. heads \$4 00
 5 to 6-ft. stems, 3-yr. heads 5 00
 5 to 6-ft. stems, 5-yr. heads 9 00
 Heavy Specimens 18 00

SHADE TREES

- ACER dasycarpum wieri.** *Wier Cutleaf Maple.* A variety of the Silver Maple; branches drooping; foliage deeply divided. Each
 12 to 15 ft., 2 to 2½-in. cal. \$4 00
 12 to 15 ft., 2½ to 3-in. cal. 5 00
 15 to 18 ft., 3 to 3½-in. cal. 6 00
- A. platanoides.** *Norway Maple.* Beautiful trees of fine form with large, shining foliage. Each
 10 to 12 ft., 1¾ to 2-in. cal. \$3 75
 12 to 15 ft., 2 to 2½-in. cal. 5 00
 12 to 15 ft., 2½ to 3-in. cal. 6 50
 15 to 18 ft., 3 to 3½-in. cal. 8 00
 15 to 18 ft., 3½ to 4-in. cal. 10 00
 15 to 18 ft., 3½ to 4-in. cal. B&B. 17 50
 16 to 18 ft., 4 to 5-in. cal. B&B. 25 00
 18 to 20 ft., 5 to 6-in. cal. B&B. 35 00
- A. platanoides schwedleri.** *Large-growing Purpleleaf Maple.* A form of the above with leaves bright red when young. Each
 12 to 15 ft., 2 to 2½-in. cal. \$6 50
 12 to 15 ft., 2½ to 3-in. cal. 7 50
 15 to 18 ft., 3 to 3½-in. cal. 8 50
- ÆSCULUS hippocastanum.** *Horsechestnut.* Shapely trees with attractive flowers and large, inedible nuts. Each Each
 6 to 8 ft. \$3 00 | 8 to 10 ft. \$4 00
- BETULA alba.** *White Birch.* A slender tree with white bark. Branched, 3 stems. Each Each
 6 to 8 ft. \$3 50 | 8 to 10 ft. \$4 50
- B. alba laciniata.** *Weeping Cutleaf Birch.* A drooping fountain of deeply cut leaves. Each Each
 8 to 10 ft. \$4 00 | 10 to 12 ft. \$5 00

- FAGUS sylvatica asplenifolia.** *Fernleaf Beech.* Stately tree with lovely deeply cut foliage. A splendid specimen. Each
 5 to 6 ft. B&B. \$9 00
 6 to 8 ft. B&B. 12 00
- F. sylvatica pendula.** *Weeping Beech.* Attractive type of the European Beech having pendulous branches. A nice lawn tree. Each
 6 to 7 ft. B&B. \$10 00
 7 to 8 ft. B&B. 12 00
 8 to 10 ft. B&B. 16 00
- F. sylvatica purpurea riversi.** *Purple Beech.* The May and June foliage is rich purple, changing to purplish green with the season. Each
 6 to 8 ft. B&B. \$12 00
 8 to 10 ft. B&B. 15 00
- FRAXINUS americana.** *White Ash.* Fairly rapid grower; assumes pleasing golden tones in autumn. Each
 10 to 12 ft., 1¾ to 2-in. cal. \$3 50
 12 to 14 ft., 2 to 2½-in. cal. 5 00
 15 to 18 ft., 2½ to 3-in. cal. 6 50
- GINKGO biloba.** *Maidenhair-tree.* Stately, spreading trees with attractive foliage. Quite rare. Each
 10 to 12 ft., 1½ to 1¾-in. cal. \$7 00
 10 to 12 ft., 1¾ to 2-in. cal. 8 00
- LABURNUM vulgare.** *Golden Chain Tree.* Long racemes of yellow flowers in May and June on a small tree. Each
 5 to 6 ft. \$2 25 | 6 to 7 ft. \$3 30
- LIQUIDAMBAR styraciflua.** *Sweet Gum.* Dark green foliage; good autumn color. Each
 6 to 8 ft. \$3 75
 8 to 10 ft., 1½ to 1¾-in. cal. 4 50
 8 to 10 ft., 1¾ to 2-in. cal. 5 75
- PLATANUS orientalis.** *Oriental Plane.* A fine street or lawn tree with pale, shedding bark. Each
 10 to 12 ft., 1¾ to 2-in. cal. \$4 00
 12 to 15 ft., 2 to 2½-in. cal. 5 00
 12 to 15 ft., 2½ to 3-in. cal. 7 00
 15 to 18 ft., 3 to 3½-in. cal. 10 00
- POPULUS nigra italica.** *Lombardy Poplar.* A close-growing columnar tree. Each
 8 to 10 ft. \$1 10 | 10 to 12 ft. 1 80
- QUERCUS palustris.** *Pin Oak.* A quick-growing Oak of fine form. Each
 12 to 15 ft., 2 to 2½-in. cal. \$6 00
 12 to 15 ft., 2½ to 3-in. cal. 9 00
 12 to 15 ft., 3 to 3½-in. cal. 10 50
 15 to 16 ft., 3½ to 4-in. cal. 12 00
 15 to 16 ft., 4 to 4½-in. cal. B&B. 25 00
 16 to 18 ft., 4½ to 5-in. cal. B&B. 35 00
- SALIX babylonica.** *Weeping Willow.* A lovely waterside tree. Each
 6 to 8 ft. \$2 00 | 8 to 10 ft. \$3 50
 8 to 10 ft., 2½ to 3-in. cal. 5 00
- NOTE.** Prices of Deciduous Trees listed above include delivery but not planting or guying. Planting cost will be gladly submitted on request.

HARDY VINES

- AKEBIA quinata.** A dense vine bearing violet-brown flowers. Likes the sun. 2-yr., 50 cts. each.
- AMPELOPSIS veitchi.** *Boston Ivy.* A popular vine that grows rapidly and clings firmly to any material. Glossy, green foliage turning to crimson in fall. 2-yr., 40 cts. each, \$4 per doz.
- BIGNONIA radicans.** *Trumpet-creeper.* Grows 20 to 30 feet high. Large, trumpet-shaped, scarlet-orange flowers in July. 3-yr., 50 cts. each, \$5 per doz.
- CELASTRUS orbiculatus.** *Oriental Bittersweet.* A rapid-growing, twining vine to 15 to 20 feet, with bright orange and scarlet fruits. Splendid for winter decoration. 3-yr., 50 cts. each, \$5 per doz.
- CLEMATIS jackmani.** *Jaekman Clematis.* Grows 10 to 12 feet high. Very showy, with large, rich violet-purple flowers. \$1 each.
- C. paniculata.** *Sweet Autumn Clematis.* A quick grower, 20 to 30 feet high, and free spreader, covered in August and September with pure white, star-like flowers. 2-yr., 35 cts. each, \$3.50 per doz.

- EUONYMUS radicans.** A dense trailer with white-veined, dull green leaves. 12 to 15 in., 3-yr., 50 cts. each.
- E. radicans coloratus.** A trailer with bright red winter foliage. 1½ to 2 ft., 3-yr., 50 cts. each.
- HEDERA hibernica.** *English Ivy.* Used for covering walls, trunks of trees, or ground. 4-in. pots, 35 cts. each, \$3.50 per doz.
- HYDRANGEA petiolaris.** *Climbing Hydrangea.* Plants from 4-in. pots, \$1 each, \$10 per doz.
- JASMINUM nudiflorum.** *Winter Jasmine.* 3 ft. Yellow flowers in early spring. Needs protection in extreme climates. 2-yr., 75 cts. each, \$7.50 per doz.
- LONICERA japonica halliana.** *Hall Japanese Honeysuckle.* We have long specialized in the production of this most popular evergreen vine. Quick-growing, free-blooming, and deliciously fragrant. Grows 15 to 25 feet high. Flowers open white and change to buff. Strong 3-yr., 35 cts. each, \$3.50 per doz., \$25 per 100.
- WISTERIA sinensis.** *Chinese Wisteria.* Of exceedingly rapid growth, reaching 40 to 50 feet; soft, dainty, lavender-blue flowers in May produced in pendulous racemes a foot long. Extra-strong, 3-yr., 75 cts. each, \$7.50 per doz.

Bedding Plants

We carry a full line of Bedding Plants suitable for cut-flowers, bedding, and window-boxes. We offer these principally for customers within delivery distance for our trucks. It is not advisable to ship annuals.

Annual Plants

All our Annuals are strong, healthy plants potted in individual pots. These potted Annuals produce better results than ordinary plants from flats because the roots are not disturbed when transplanted. Annuals may be planted any time after May 15. We carry a large variety of Annuals and Annual vines including all the latest novelties, many of which will be of great assistance in the perennial border. Annual price-list sent on request.

Have you ever grown Turner's Delphiniums? They are the finest grown, with immense spikes of large flowers of all shades.



HARDY PERENNIAL COLLECTIONS

These two Collections of Perennials are made up of fine, strong, dependable plants that will flower the first season after they are planted. Each Collection is a complete hardy garden, consisting of plants of various heights, colors, and flowering periods, which will insure a profusion of bloom throughout the season. Either is a splendid investment that will bring returns in ever-increasing plant and floral delights each season for years to come.

Collection of 50 Plants, \$8

For descriptions of varieties, consult Catalogue

Key

1. 4 Aquilegia. 1 ft.
2. 3 Coreopsis. 2 ft.
3. 5 Delphinium belladonna. 1½ ft.
4. 4 Stokesia. 1 ft.
5. 3 Dianthus plumarius. 1 ft.
6. 4 Gaillardia. 1½ ft.

Key

7. 5 Funkia variegata. 1½ ft.
8. 4 Heliopsis pitcheriana. 2 ft.
9. 4 Iris, German. 2 ft.
10. 6 Phlox. 2 ft.
11. 4 Rudbeckia purpurea. 2 ft.
12. 4 Veronica longifolia subsessilis. 2 ft.

Collection of 100 Plants, \$15

For descriptions of varieties, consult Catalogue

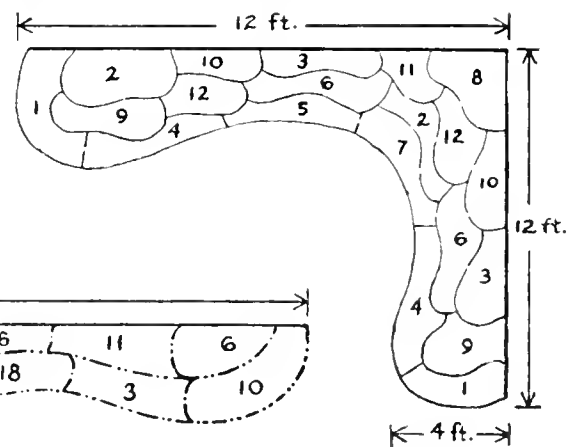
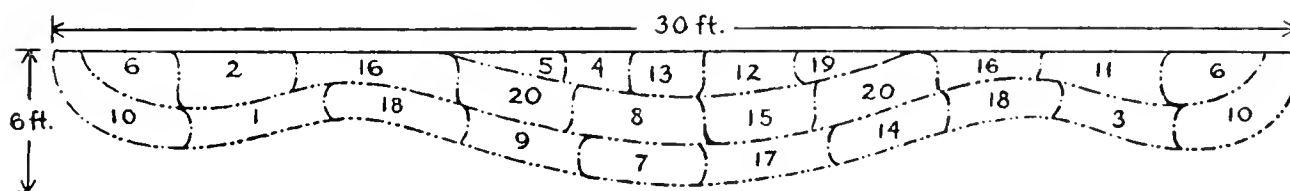
Key

1. 4 Stokesia. 1 ft.
2. 3 Anemone italica. 2½ ft.
3. 6 Aquilegia. 1 ft.
4. 3 Artemisia lactiflora. 2 ft.
5. 5 Chrysanthemum. 2 ft.
6. 6 Delphinium belladonna. 1½ ft.
7. 5 Dianthus plumarius. 1 ft.
8. 4 Pentstemon. 2 ft.
9. 6 Gaillardia. 1½ ft.
10. 6 Funkia variegata. 1½ ft.

Key

11. 4 Hardy Aster. 2½ ft.
12. 4 Heliopsis pitcheriana. 2 ft.
13. 4 Hollyhocks. 2½ ft.
14. 4 Matricaria, Golden Ball. 1 ft.
15. 5 Platycodon. 1½ ft.
16. 8 Phlox. 2 ft.
17. 5 Pyrethrum. 1½ ft.
18. 6 Sedum spectabile. 1½ ft.
19. 4 Thermopsis
20. 8 Veronica longifolia subsessilis. 2 ft.

On this page there is one plan for each Collection, with dimensions and key numbers, showing where to place the different varieties according to their height. The number after each variety indicates the approximate distance the plants should be placed apart.





Just a sample of the kind of gardens this nursery can design and plant for you

HARDY PERENNIALS and ROCK-PLANTS

These old-fashioned, hardy flowers have won an important place in the gardens of most flower-lovers because of their varied formation and gorgeous range of color. Year after year they are among the first flowers to greet us in the spring, with renewed vigor after the winter rest, and the last flowers to leave us in the fall.

Considering the countrywide trend toward economy, the perennial garden, in the long run, is the most economical garden to plant because

once planted it eliminates the expense of replanting every year. Many varieties are useful as cut-flowers. They need very little care outside of weeding and cultivation. After the first hard frost, cut the tops down and cover with a good coat of well-rotted manure.

Plants of the following varieties are fine, strong, nursery-grown stock, with the exception of a few that are best transplanted from pots, and will bloom abundantly this year.

Six plants of one variety at dozen rate; 25 at 100 rate

R following the name of a plant indicates that it is suitable for the rock-garden; **R*** that it is large enough to be grown on the edge of the hardy border as well as in the rock-garden

Achillea • Yarrow

Parker's Variety. Yellow. 2½ ft. June-Sept. 25 cts. each, \$2.50 per doz., \$17.50 per 100.
Ptarmica, Boule de Neige. *Ball of Snow.* Fuller and more perfect flowers than The Pearl; are excellent for cutting. 1½ ft. June-Sept. 20 cts. each, \$2 for 10, \$15 per 100.

Aconitum • Monkshood

A very desirable blue, late-flowering plant that can be grown in shade. Best when well established.
Napellus, Sparks Variety. Blue. 5 to 6 ft. July, Aug. 35 cts. each, \$3.50 per doz., \$25 per 100.

Agrostemma

Coronaria. Mulein Pink. R* Long gray or silvery leaves and vigorous, stiffly branching plants covered with round, brilliant purple-crimson flowers. Very showy; looks especially well near pale yellow flowers. 2 ft. June, July. 20 cts. each, \$2 per doz., \$15 per 100.

Ajuga

Reptans. R Prostrate ground-cover with deep purplish blue flowers. May, June. 25 cts. each, \$2.50 per doz.

Alyssum

Saxatile compactum. Golden Tuft. R* Produces a mass of bright yellow flowers. April, May. 1 ft. 20 cts. each, \$2 per doz., \$15 per 100.

Anchusa • Bugloss

Italica. A robust, erect plant with clusters of large, gentian-blue flowers. If not allowed to go to seed, it will bloom from June to September. 4 to 5 ft. 20 cts. each, \$2 per doz., \$15 per 100.

Myosotidiflora. R* A distinct, dwarf perennial with clusters of forget-me-not-like flowers. An effective rock-plant that will grow in the shade. 1 ft. April, May. 25 cts. each, \$2.50 per doz., \$17.50 per 100.

Anemone • Windflower

A late-flowering perennial with large, open blooms borne on long, graceful stems.

Hupehensis. R This variety produces an abundance of pleasing mauve-rose flowers from August till late fall. 12 to 15 in.

Japonica, Queen Charlotte. A strong grower, producing large, semi-double pink flowers. 3 ft. Late fall.

Japonica, Whirlwind. Semi-double; white. 3 ft. Late fall.

All Anemones, 30 cts. each, \$3 per doz., \$20 per 100

Anthemis • Golden Marguerite

Tinctoria, Perry's Variety. This has large, Marguerite-like flowers of golden yellow, fine for cutting. 2 ft. June-Oct. 25 cts. each, \$2.50 per doz., \$17.50 per 100.

Aquilegia • Columbine

Very graceful and beautiful perennials that do well in partial shade. Good cut-flower.

Blue Shades. Selected, long-spurred types in all the desirable shades of blue. Useful in preparing color schemes. 30 cts. each, \$3 per doz.

Crimson Star. Very large, long-spurred flowers of rich crimson with a white cup. 35 cts. each, \$3 per doz.

Farquhar's Pink. A fine selection of pink shades of long-spurred, strong-growing hybrids. 30 cts. each, \$3 per doz.

Flabellata nana. R* A delightful dwarf variety, not over 8 inches high, for the rockery, with perfect foliage.

Longissima. Creamy yellow flowers with the longest spurs of any of the Columbine family. Very distinct. 35 cts. each, \$3.50 per doz.

Mrs. Scott Elliott's Long-spurred Hybrids. Wonderful colors with long-spurred flowers.

All Aquilegias, 25 cts. each, \$2.50 per doz., \$17.50 per 100, except where otherwise noted

Arabis • Rock-Cress

Alpina. R* A mat of gray-green foliage above which the pure white flowers appear like a snowy cloud. 5 in. April, May. 20 cts. each, \$2 per doz., \$15 per 100.

Arenaria • Sandwort

Grandiflora. R* Plant covers itself with pure snow-white, star-like flowers. Fine rock-plant. 25 cts. each, \$2.50 per doz., \$17.50 per 100.

Armeria · Thrift

Lauchena. R* Very free flowering. Bright rosy red. 3 to 6 in. May-July. 25 cts. each, \$2.50 per doz., \$17.50 per 100.

Artemisia

Lactiflora. A tall-growing plant with fine foliage and heads of small white flowers which fill the garden with fragrance. Good for cutting. 3 to 4 ft. Aug., Sept. 25 cts. each, \$2.50 per doz., \$17.50 per 100.

Silver King. Striking white-leaved contrast plant. Beautiful "mist" for setting off bouquets and floral combinations. 3 ft. 25 cts. each, \$2.50 per doz., \$17.50 per 100.

Asclepias · Butterfly Weed

Tuberosa. Attractive plants producing umbels of bright orange-colored flowers. Good for cutting. 1½ ft. July, Aug. 20 cts. each, \$2 per doz., \$15 per 100.

Astilbe

Betsy Cuperus. The fine, drooping flower-spikes show in summer during some weeks, a great number of white flowers with pink centers. 2 ft. 35 cts. each, \$3.50 per doz., \$25 per 100.

Deutschland. A strong-growing variety with pure white flowers in generous quantities in summer. 35 cts. each, \$3.50 per doz.

Queen Alexandra. Deep pink flowers on free-flowering plants in summer. A fine variety. 35 cts. each, \$3.50 per doz.

Aster · Michaelmas Daisy

Lovely autumn-flowering perennials, very decorative in the border and as cut-flowers.

NOVELTIES IN HARDY ASTERS

Alderman Vokes. Clear rose-pink with blue sheen. 3 ft. Sept.

Beechwood Challenger. The lovely flowers are the clearest of reds, enhanced by bright yellow centers. Bushy plants, 4 feet tall, with clean, healthy foliage.

Blue Bouquet. Semi-double, clear blue flowers. 2 ft. Sept.

Blue Eyes. Violet-blue with yellow eye. 4 ft. Sept.

Blue Plume. Deep blue, semi-double flowers on loose-growing, free-branching plants. Height 3 to 4 ft.

Harrington's Pink. A new pink Aster with large flowers that are really pink; and there are a lot of them on bushy plants about 4 feet tall. Beautiful. 50 cts. each, \$5 per doz.

Little Boy Blue. Blooms early in September, with flowers of deep lavender-blue. Compact growth, 2½ feet tall. 25 cts. each, \$2.50 per doz.

Mammoth. Immense, semi-double warm lavender flowers. Believed to have the largest flowers of all the Hardy Asters. A good cutting Aster. 5 to 6 ft.

Mount Everest. Tall, branching plants; clear white flowers with tiny centers. The finest white. Sept.

Pink Nymph. Rich rosy red, changing to bright pink. 4 ft. Sept.

Red Rover. The first really red Aster, with attractive rosy red flowers. Sept.

Silver Sheen. Distinctive silvery blue flowers. Sept.

All Hardy Novelty Asters, except where otherwise noted, 35 cts. each, \$3.50 per doz.

STANDARD VARIETIES

Barr's Pink. Shapely plants with bright pink flowers. 4 to 5 ft.

Emily Thory. Pinkish lavender. 3 ft.

Freedom. A very beautiful Aster with deep blue petals and deep yellow center. 3 ft.

Heather Glow. Very free and vigorous grower, with large flowers of a delightful shade of brilliant rose, golden center. 4 ft.

Maid of Athens. Soft lavender-blue. 3 ft.

Standard Asters, continued

Queen Mary. Very large, graceful flowers arranged loosely in branching panicles of very pleasing blue tinted lavender. 3½ ft.

Royal Blue. Large rich purple-blue flowers with golden yellow centers. Stout, branching plants.

Sam Banham. White, yellow disk. 4 to 5 ft.

St. Egwin. A pleasing rosy pink, compact, free-blooming dwarf. 1½ to 2 ft.

White Climax. Large white flowers. 4 to 5 ft. Aug.-Oct.

All Standard Varieties, 25 cts. each, \$2.50 per doz., \$17.50 per 100

NEW DWARF HARDY BORDER ASTERS

Constance. Nice flowers of an attractive shade of light pink. 15 in.

Countess of Dudley. Clear pink; yellow eye. 9 in.

Lady Henry Maddocks. Clear pale pink. Dwarf, compact plants. 1 ft.

Lavanda. Vivid light blue of an unusually clear shade. 15 in.

Lilac Time. Rounded plants with deep violet-blue flowers. 15 in.

Marjorie. Bright rose-pink. 12 in.

Nancy. Pale flesh-pink flowers completely cover plant. 1 ft.

Niobe. Ball-shaped plants about 15 inches high with sparkling white flowers.

Ronald. Bright lilac-pink blooms; rose-pink buds. 1 ft.

Victor. Large flowers of clear lilac-blue. 9 in.

All New Dwarf Hybrid Border Asters, 25 cts. each, \$2.50 per doz.

Aster frikarti. A most attractive hardy summer Aster of neat, upright, branching growth. Bears a profusion of large, showy lavender-blue flowers from mid-August to October. 2½ ft. 50 cts. each, \$5 per doz.

A. alpinus. R Spring flowering. Bluish purple blooms. 6 in. 25 cts. each, \$2.50 per doz.

A., Mauve Cushion. R A distinct species which forms a circular, cushion-like plant rarely over 9 inches high. Delicate mauve flowers with silvery white sheen, 1¼ inches in diameter completely cover the plant. Oct., Nov. 25 cts. each, \$2.50 per doz.

A., Wartburg Star. Large, rich blue flowers with a golden center. 2 ft. Spring blooming. 25 cts. each, \$2.50 per doz.

Aethionema

Persicum. Persian Candytuft. R Blue-gray foliage. Light rose flowers. 25 cts. each, \$2.50 per doz.

Aubrietia

Eyrei. R Large violet flowers. 25 cts. each, \$2.50 per doz.

Baptisia · False Indigo

Australis. A strong-growing plant with racemes of dark blue, lupine-like flowers. 3 ft. May-July. 20 cts. each, \$2 per doz., \$15 per 100.

Boltonia

Latisquama. Pinkish lavender flowers that resemble Michaelmas daisies. 6 to 7 ft. Aug., Sept. 20 cts. each, \$2 per doz., \$15 per 100.

Campanula

Carpatica. Harebell. R Light blue, small, bell-like flowers suitable for rockery. 8 in. July, Aug.

Glomerata. Forms a dense tuft of dark green foliage covered with globular, dark blue flowers. 1½ ft. June, July.

Latifolia, Blue. Large, bell-shaped flowers. 2 ft.

Medium. Canterbury Bells. A biennial of pyramidal growth, covered with large, bell-shaped flowers in separate colors—Blue, Pink, White. 2 ft. May, June.

Campanula, continued

Persicifolia, Telham Beauty. A wonderful novelty. With its single, rich blue, large, bell-shaped flowers, this variety is an attractive plant for perennial border and cutting. 2 to 2½ ft. June, July.

Pyramidalis. Long spikes covered with star-like flowers all summer. Excellent for background in hardy border. Two colors—Blue, White. 4 to 6 ft.

All Campanulas, 25 cts. each, \$2.50 per doz., \$17.50 per 100

Caryopteris

Incana (mastacanthus). Blue Spirea. A fine border plant and cut-flower. 3 ft. Sept., Oct. 30 cts. each, \$3 per doz., \$20 per 100.

Catananche · Cupid's Dart

Cærulea. R* A plant with hoary, lance-shaped leaves and crisp, pretty, deep blue flowers produced profusely on 1½-foot stems. Good cut-flower. July-Sept. 25 cts. each, \$2.50 per doz., \$17.50 per 100.

Centaurea

Macrocephala. Very showy, with large, thistle-like yellow flowers. 3 ft. July, Aug. 25 cts. each, \$2.50 per doz., \$17.50 per 100.

Montana. Mountain Bluet. Large, blue flowers, resembling cornflowers. 2 ft. June-Sept. 20 cts. each, \$2 per doz., \$15 per 100.

Cerastium

Tomentosum. Snow-in-Summer. R* A low-growing plant with silvery white foliage and producing an abundance of snow-white flowers in May. 25 cts. each, \$2.50 per doz., \$17.50 per 100.

Cheiranthus

Allioni. Branching plants about a foot tall, bearing fragrant orange-yellow flowers from mid-spring to mid-summer. 25 cts. each, \$2.50 per doz.

Chrysanthemum, Hardy

Produce a wonderful display after ordinary garden flowers are gone. They do best when planted in sheltered positions. If medium-height, bushy plants are desired, pinch tops back when 6 to 8 inches high.

Albert Muller. Two-inch pompons of fawn color, an interesting shade. Very bushy. 15 in.

Astrid. Single flowers of a lovely shade of shell-pink, with bronzy tints and bright yellow centers. Very hardy.

Barbara Cumming. Yellow, shaded bronze. The best early double. Aug., Sept.

Crimson Splendor. Rich crimson-garnet; semi-double. Early. Sept.

Early Bronze. An outstanding early Pompon. Neat; dwarf. Bronze-yellow. Aug.

Ethel. Pompon. Deep crimson-bronze.

Excelsior. Pompon. Brilliant yellow.

Flashlight. Three-inch bronzy red flowers, reverse pale yellow. Early Sept.

Irene. A lovely little Button Chrysanthemum of pure white. Grows 2 feet tall. Blooms mid-October.

Jean Cumming. Large; double; white. Mid-Sept.

Jean Treadway. Large flowers of aster formation. Color lovely sparkling pink, with dark rose-pink center. End of Sept.

Judith Anderson. Large buttons or small pompons of clear butter-yellow. Low, spreading plants.

Leilah. Large pompon of rose-pink.

Lillian Doty. Pompon. Pink, shading to flesh; large.

Normandie. Decorative. A large pure white. Very early.

October Girl. Semi-double. Bright rose-pink, shading to lavender. Early.

R. Marion Hatton. Remarkably free bright canary-yellow Decorative Pompon. Late Sept.

Hardy Chrysanthemums, continued

- Ruth Cumming.** Decorative. Reddish bronze.
Wanda. Pompon. Large; white.
White Doty. Pompon. White, large flower.
Yellow Normandie. Decorative. Bronze-yellow.
Chrysanthemum maximum, Esther Read. Large, snow-white Shasta Daisy on 15 to 18-inch stems. Blooms freely throughout the summer. \$1 each, \$10 per doz.

C. maximum, Shasta Daisy. White, single flowers.

All Hardy Chrysanthemums, except where noted,
20 cts. each, \$2 per doz., \$15 per 100

KOREAN HYBRID CHRYSANTHEMUMS

The original strain of Korean Hybrid Chrysanthemums and a new group which comes into bloom somewhat earlier than the older varieties

- Ceres.** A lovely combination of old-gold, cham-
 ois-yellow, and coppery bronze. October 10.
Daphne. Daphne-pink, with an underlying
 sheen of lilac-rose. October 12.
Diana. Chatenay-rose-pink, mingled with lilac-
 rose and soft salmon. October 12.
Hestia. Rose-pink.
Mars. Deep amaranth-red, changing to wine-
 red, overlaid with a velvety sheen. October 15.
Sappho. Clear yellow.
Saturn. Orange and bronze, with an orange
 halo around the center button. October 5.
Venus. Lilac-pink.
Vesta. Golden orange.

Price of above Koreans, 25 cts. each, \$2.50 per doz.

DOUBLE KOREAN HYBRIDS

- Ember.** Double flowers of brilliant bronze in
 fine sprays on long stems. Plants 2½ feet
 tall. Blooms mid-October.
Indian Summer. A vivid, glowing, orange-
 scarlet flower 3 inches across, somewhat
 shaggy. Plants 2 to 2½ feet high.
King Midas. Large, fluffy flowers of soft yellow
 tinted bronze on 2½-foot plants blooming in
 late September.
Lavender Lady. New. Large, double flowers
 of true lavender—a new color in Chrysanthem-
 ums. Plants 2½ feet tall. Blooms October 8.
 75 cts. each, \$7.50 per doz.
The Moor. Splendid double flowers of port-
 wine-red. Plants 2 feet tall. Blooms late
 September.

Price of Double Koreans, except where noted,
25 cts. each, \$2.50 per doz.

DWARF HARDY CHRYSANTHEMUMS

A dwarf, compact type, covered with hun-
 dreds of flowers from early till late in the season.
 Forms a low compact plant resembling an
 azalea.

- Amelia** (Pink Cushion). Pink shade.
King Cushion. Bronzy salmon-pink.
Queen Cushion. Pure white.

20 cts. each, \$2 per doz.

Cimicifuga • Bugbane

- Racemosa.** White, feathery flowers on slender
 stems. Grows well in shade. 4 to 5 ft. July,
 Aug. 35 cts. each, \$3.50 per doz., \$25 per 100.

Coreopsis

- Grandiflora.** Golden yellow flowers on long,
 slender stems. Good for cutting. 2 ft. June-
 Oct. 20 cts. each, \$2 per doz., \$15 per 100.

Dianthus • Hardy Pinks

Old-time flowers with spicy fragrance. No
 garden is complete without these useful plants.

- Alpinus.** R Glossy, compact foliage with deep
 rose-colored flowers. 3 in. 25 cts. each, \$2.50
 per doz.

Dianthus, continued

Barbatus. *Sweet William.* An old favorite
 biennial, but in some soils it is a perennial in
 character. Very effective in beds or in the
 border massed. Fine cut-flower. 1½ to 2 ft.
 May, June. 20 cts. each, \$2 per doz., \$15
 per 100.

Newport Pink. A distinct variety in a favorite
 color—salmon-rose. 20 cts. each, \$2 per doz.,
 \$15 per 100.

Beatrix. R This new hardy Pink is one of the
 finest introductions of late years. It makes a
 compact plant with dark green foliage and
 produces semi-double, rose-pink flowers which
 have a wonderful fragrance. 15 to 18 in. All
 summer. 25 cts. each, \$2.50 per doz., \$17.50
 per 100.

Cæsius. R Very compact in growth, and makes
 a cushion of glaucous leaves from which, in
 May, spring the sweet-smelling, rose-colored
 flowers. 25 cts. each, \$2.50 per doz., \$17.50
 per 100.

Deltoides, Brilliant. R* A beautiful little
 prostrate plant with narrow leaves and bearing
 a profusion of small, glowing crimson-red
 flowers. Excellent rock-plant. June, July.
 25 cts. each, \$2.50 per doz., \$17.50 per 100.

Delphinium
A Turner Specialty

TURNER'S PRIZE-WINNING HYBRIDS

Selected Plants. From thousands of wonder-
 ful hybrids growing in our fields each year we
 select a limited number of the very finest types
 in separate shades of **Pale Lavender and Blue,**
Deep Lavender and Blue, and **Purple.**

Each one of these plants has been carefully
 chosen when in flower because of its unusual
 merit. Your choice of the above colors,

\$1 each, \$10 per doz., \$75 per 100

Assorted Plants. This grade includes the
 regular run of the field, covering the entire color-
 range but not marked for color or type.

50 cts. each, \$5 per doz., \$35 per 100

Potted Plants. We also have young plants
 in 3-inch pots for very late spring sales after
 field-grown plants are too far advanced to be
 transplanted. Although they will not produce
 as many flower-spikes as the field-grown plants
 the first year, they will flower the latter part of
 the summer.

35 cts. each, \$3.50 per doz., \$25 per 100

THE NEW PINK HYBRID

Pink Sensation. (Plant Patent No. 324.) A
 real sensation in the plant world. The light
 rose-pink flowers are borne in profusion on
 Belladonna-type plants. About 4 feet tall.
 \$1.25 each, \$12.50 per doz.

OTHER DELPHINIUMS

Belladonna. *Larkspur.* One of the most beauti-
 ful perennials, noted for its stately spikes of
 light blue flowers. 2 to 3 ft. June-Oct. 20 cts.
 each, \$2 per doz., \$15 per 100.

Bellamosa. Same as above, but dark blue.

Chinense. R* A very pretty dwarf species,
 with fine, feathery foliage and intense gentian-
 blue flowers in open panicles. 12 to 15 in.
 June-Aug. 20 cts. each, \$2 per doz., \$15
 per 100.

Dicentra

Eximia. The fringed Bleeding-heart is a lovely
 little plant with fern-like foliage and a pro-
 fusion of little pink hearts in drooping racemes.
 Plants are only about 1 foot tall. 35 cts. each,
 \$3.50 per doz.

Spectabilis. *Bleeding-heart.* An old-fashioned
 favorite with long racemes of very attractive,
 graceful, heart-shaped pink flowers. 50 cts.
 each, \$5 per doz., \$35 per 100.

Dictamnus

Fraxinella. Attractive plant with glossy green
 leaves. It improves with age, never getting
 out of bounds. Flowers in June. White or
 Rose. 35 cts. each, \$3.50 per doz.

Digitalis • Foxglove

Purpurea gloxiniaeflora. *Gloxinia-flowered Fox-*
glove. Flowers spotted. In separate colors—
 Rose, Purple, and White. 2 to 3 ft. June, July.
Giant Shirley, Mixed. This is a magnificent
 strain, attaining a height of from 5 to 7 feet,
 with spikes of bloom 4 feet long. Flowers from
 purest white to rose-pink, spotted with crim-
 son-maroon and chocolate. June, July.
 All Digitalis, 20 cts. each, \$2 per doz., \$15 per 100

Doronicum • Leopard's-Bane

Caucasicum. Golden yellow, daisy-like flowers
 produced on stiff stems. Showy and its keeping
 quality as a cut-flower is excellent. 1½ to 2 ft.
 Very early. 35 cts. each, \$3.50 per doz.,
 \$25 per 100.

Epimedium

Niveum. R An interesting, hardy plant with
 pretty foliage and white flowers in April and
 May. Does well in shade. 9 in.

Sulphureum. Pale yellow. Same as above.

All Epimediums, 50 cts. each, \$5 per doz.

Erigeron • Fleabane

Speciosus. Very effective plants resembling
 Michaelmas daisies. Large, handsome blue
 flowers, tinted violet with yellow centers. 2 ft.
 June, July. 25 cts. each, \$2.50 per doz.,
 \$17.50 per 100.

Euphorbia

Corollata. *Flowering Spurge.* Showy, useful
 plant bearing umbels of pure white flowers
 much like Baby's Breath, and fine for cutting.
 2 ft. June-Aug. 20 cts. each, \$2 per doz.,
 \$15 per 100.

Eupatorium

Cælestinum. *Mist Flower.* A fine, hardy plant
 with light blue flowers similar to the ageratum.
 Excellent cut-flower. 2 ft. Aug.-Oct.

Urticifolium (*ageratoides*). Similar to the
 above in white. Fine for naturalizing in a
 woodland or for use in border. 3 ft. Aug., Sept.
 All Eupatoriums, 20 cts. each, \$2 per doz., \$15 per 100

Funkia (Hosta) • Plantain Lily

Very handsome plant that will thrive any-
 where in border, rockery, marshy ground, or
 shade.

Lanceolata. R* Purplish mauve. Dark green
 foliage. Late flowering. 2 ft. Sept. 20 cts.
 each, \$2 per doz., \$15 per 100.

Subcordata grandiflora. R* Very large, pure
 white, lily-shaped, fragrant flowers. 2½ to
 3 ft. Aug., Sept. 35 cts. each, \$3.50 per doz.,
 \$25 per 100.

Variegata. R* One of the best Funkias. It has
 ovate leaves, the margins deep green and
 center a beautiful creamy white. Purple flow-
 ers. 2 ft. July, Aug. 25 cts. each, \$2.50 per
 doz., \$17.50 per 100.

Gaillardia

Burgundy. (New.) Shining wine-red Gaillardia.
 One of the finer novelties of European ori-
 gination. 1½ ft. May-Oct. 35 cts. each, \$3.50
 per doz., \$25 per 100.

Goblin. Dwarf mounds, 8 inches high and
 15 inches across, covered with golden yellow
 and wine-red flowers. May to October.
 25 cts. each, \$2.50 per doz.

Grandiflora. One of the most desirable hardy
 plants in cultivation, and its brilliancy is un-
 surpassable. Yellow and orange-red flowers.
 1½ to 2 ft. May-Nov. 20 cts. each, \$2 per
 doz., \$15 per 100.

Mr. Sherbrook. A dependable English variety
 with flowers of rich golden yellow. May to
 October. 25 cts. each, \$2.50 per doz.

Gypsophila · Baby's Breath

Bristol Fairy. A wonderful new introduction that produces large panicles of double, white flowers in which the individual bloom is larger than *Paniculata*, and of purest white. 2 to 3 ft. Also continues to flower throughout summer. 50 cts. each, \$5 per doz., \$40 per 100.

Repens bodgeri. A new dwarf form, 2 feet tall and rather compact. The flowers are pink tinted white, the earliest of all double *Gypsophilas*. 50 cts. each, \$5 per doz.

Heliopsis

Pitcheriana. Flowers a beautiful deep golden yellow, diameter about 2 inches, very thick in texture. Keeps a very long time cut. 3 ft. July, Aug. 20 cts. each, \$2 per doz., \$15 per 100.

Helenium · Sneezeweed

Riverton Beauty. Pure lemon-yellow, with large disk of purplish black. 5 ft. Aug., Sept.

Riverton Gem. Old-gold, suffused bright terracotta, changing to wallflower-red. 3 to 4 ft. Aug.-Oct.

All *Heleniums*, 25 cts. each, \$2.50 per doz., \$17.50 per 100

Helianthemum · Sun Rose

Mutabile, Mixed. R* A dainty, dwarf alpine for rockery. Glossy green foliage. Flowers pastel colors from pink to orange. 25 cts. each, \$2.50 per doz., \$17.50 per 100.

Helianthus · Sunflower

Multiflorus fl.-pl. *Double Hardy Sunflower.* Golden yellow, dahlia-like flower about 3 inches in diameter. One of the best varieties. Excellent cut-flower. 3 to 4 ft. Aug., Sept. 25 cts. each, \$2.50 per doz., \$17.50 per 100.

Heemerocallis · Day Lilies

Very graceful and stately plants, excellent for the waterside, naturalizing, or growing in the partially shaded border. Long, narrow leaves and yellow or orange flowers.

NEW GIANT HEMEROCALLIS

Anna Betscher. Rich golden yellow. 2½ ft. August.

Aureole. Rich orange-yellow. 3 ft. May, June.

Donald Wyman. Very large orange flowers, the center petals shaded mahogany. Mid-season.

Goldeni. Deep golden orange flowers. June, July.

Gypsy. Large reddish orange flowers with very broad petals. Midseason.

Helios. Clear canary-yellow. May-July.

J. A. Crawford. Large golden yellow flowers of fine form. June, July.

Lemona. Pale lemon-yellow. 5 ft. July, Aug.

Margaret Perry. Brilliant orange-scarlet with a yellow line through each petal. 3 ft. July, August.

Mrs. W. H. Wyman. Round golden flowers. Very distinct. July.

Sovereign. Lemon-colored flowers of fine form. 2½ ft. June.

The Gem. Low-growing variety with flowers of deep gold. June.

All Giant *Heemerocallis*, 35 cts. each, \$3.50 per doz.

STANDARD VARIETIES

Dr. Regel. Handsome, rich orange-yellow flowers; very fragrant and fine for cutting. 1½ ft. May.

Flava. Lemon Day Lily. Sweet-scented; cheerful yellow. 2½ ft. June.

Gold Dust. Rich coppery yellow buds; bright yellow flowers, tinged red.

Thunbergi. Japanese Day Lily. Much like *Flava*, but flowers in July. Pale yellow. 2 to 3 ft.

Standard *Heemerocallis*, 25 cts. each, \$2.50 per doz., \$17.50 per 100

Hesperis · Rocket

Matronalis. Fragrant, purple flowers in showy spikes. Desirable for mixed borders, wild garden, or shrubbery. 2 to 3 ft. June, July. 20 cts. each, \$2 per doz., \$15 per 100.

Heuchera · Alum Root

Neat-growing and graceful flowering perennials yielding an abundance of dainty, bell-like blooms in panicles. Attractive, heart-shaped leaves.

Cascade. (New.) R* Very strong grower, with light pink flowers. 2 ft. June, July.

Sanguinea, La Perle. R* Dark red. Very fine. 1½ ft. May-Sept.

All *Heucherases*, 25 cts. each, \$2.50 per doz., \$17.50 per 100

Hibiscus · Mallow

Mixed Colors. Large, hollyhock-shaped flowers borne on 6 to 8-foot stems. 25 cts. each, \$2.50 per doz.

Hollyhocks

Double-flowered. This well-known perennial, with tall, stately spikes of handsome flowers, makes a wonderful effect. Separate colors—Orange, Rose, Salmon-Rose, White, Yellow, Red, and Maroon. 6 to 8 ft. 20 cts. each, \$2 per doz., \$15 per 100.

Hypericum

Moserianum. Gold Flower. R* A most desirable border shrub of free and graceful habit, producing long, slender stems, drooping, apparently, from the weight of the flowers and buds, although they face so that none of their beauty is lost. Rich yellow. 1½ to 2 ft. All summer. 30 cts. each, \$3 per doz., \$20 per 100.

Polyphyllum. R* Pretty trailing foliage covered with bright yellow flowers. 25 cts. each, \$2.50 per doz., \$17.50 per 100.

Iberis · Hardy Candytuft

Little Gem. R A dwarf perennial with dark evergreen foliage that is completely covered with pure white flowers. Its uniform and neat habit makes it very attractive for margins of borders, edges of walks, or rockeries. This variety is very hardy. 6 in. May, June. 25 cts. each, \$2.50 per doz., \$17.50 per 100.

Iris Germanica · Flag Iris

One of the finest perennials of very easy culture. In June and July it throws up spikes of blooms that rival the orchid in delicacy of structure and exquisite blendings. S. means standing petals; F., drooping petals.

Dawn. S. and F. sulphur-yellow; throat veined bronze. 2 ft.

Empire. S. and F. yellow; throat orange. Medium size. 1½ ft.

Halo. S. pale blue; F. deep blue; throat yellow; large.

Harriet Presby. S. lavender; F. purple; throat yellow; large. 3 ft.

Hope. S. white tinted pale lavender; F. pale lavender. 2 ft.

Koya. S. deep blue; F. purple; throat veined. Good. 2½ ft.

Lindyhka. S. pale lavender-bronze; F. purple; throat yellow; large. 3 ft.

Mrs. Brewster. S. pale blue; F. deep blue. Very good. 3 ft.

Nine Wells. S. light violet-blue; F. deep purple-violet; throat showing white ground. Very good. 2½ ft.

Our King. S. pale wine-color; F. slightly deeper wine-color; throat veined deeper; medium size. 2 ft.

Patience. S. purple; F. deep purple; large. 2 ft.

Pumila, Canary Bird. R A dwarf *Iris* very useful for rockery.

All *Iris Germanica*, 25 cts. each, \$2.50 per doz., \$17.50 per 100



A planned Perennial Border in early summer

Iris Kaempferi · Japanese Iris

A magnificent family of the Iris, with attractive foliage and large flowers sometimes measuring from 10 to 12 inches across. They do not have the distinct standard of the German section, and their falls are held horizontally. The blooms appear just after the German Iris and are at their best in July.

Bride. Pinkish lavender.

Distinction. Single. Light lavender-pink with bright yellow blotches at base of petals.

Gold Bound. Best white Japanese Iris; deep yellow at bases of petals.

Pink Progress. Single. Ashy gray-lavender; clear blue halo overlaid with a silver sheen.

Purple and Gold. Violet-purple, with showy golden throat. Many petals.

Pyramid. A clear indigo-blue flower which is strikingly beautiful.

Robert Craig. Pale mauve, veined lavender.

Shadow. Single. Reddish purple—a true self color.

All Iris Kaempferi, 35 cts. each, \$3.50 per doz., \$25 per 100

Lavandula · Lavender

Vera. Spikes of dainty blue flowers in July and August. The true old lavender with unforgettable fragrance. 25 cts. each, \$2.50 per doz.

Linum · Flax

Perenne. *Perennial Flax.* R* Very attractive in both foliage and bloom. Flowers beautiful pale blue on slender, graceful stems. 12 to 15 in. May-Aug. 25 cts. each, \$2.50 per doz., \$17.50 per 100.

Liatris · Gayfeather

Pycnostachya. *Kansas Gayfeather.* A beautiful plant of unusual appearance. It throws up long spikes of rich purple flowers which last a long time. 4 to 5 ft. July, Aug. 25 cts. each, \$2.50 per doz., \$17.50 per 100.

Scariosa. Purple flowers on long spikes. 3 to 4 ft. June, July. 25 cts. each, \$2.50 per doz., \$17.50 per 100.

Scariosa alba. Tall spikes of white flowers during August and September. 50 cts. each, \$5 per doz.

September Glory. Graceful spikes of lavender-purple blooms in August and September. 3 to 4 ft. 50 cts. each, \$5 per doz.

Lupinus · Lupine

Polyphyllus. Stately and beautiful perennial with pea-shaped flowers on long spikes. In separate colors—White, Blue, and Rose. 3 ft. June-Aug. 25 cts. each, \$2.50 per doz., \$17.50 per 100.

Russell Hybrids. The most sensational perennial novelty for 1938. Perfect spikes of flowers in colors never before seen in Lupines. Strong plants about 3 feet tall. Plants from 3-in. pots, 50 cts. each, \$5 per doz.

Lythrum

Roseum superbum. *Loosestrife.* A showy plant that can be grown in shady borders and at the waterside. Bears a profusion of rosy purple spikes all summer. 2 to 3 ft. 20 cts. each, \$2 per doz., \$15 per 100.

Matricaria

Capensis alba plena. Very double, pure white, button-like flowers produced in clusters all summer. Fine cut-flower. 2 to 3 ft. 25 cts. each, \$2.50 per doz., \$17.50 per 100.

Golden Ball. Dwarf yellow form of above. Fine for edging. 8 in. All summer. 20 cts. each, \$2 per doz., \$15 per 100.

Monarda

Didyma, Red. *Oswego Tea; Bee-Balm.* The flowers are borne in close heads or whorls on 2 to 3-foot stems, surrounded by color-bracts. June-Aug. 20 cts. each, \$2 per doz., \$15 per 100.

Myosotis · Forget-me-not

Palustris. R* Pale blue. 8 in. May, June. 20 cts. each, \$2 per doz., \$15 per 100.

Nepeta

Mussini. R* A dwarf, compact plant useful for edging the border or walk, and is suitable for massing in rockery. Foliage silvery gray. Plant covered with hundreds of little lavender-blue flowers in spring and intermittently all summer. 8 in. 20 cts. each, \$2 per doz., \$15 per 100.

Oenothera

Missouriensis. R Leathery leaves close to ground from which arise large golden yellow flowers on 6-inch stems. June into Aug. 25 cts. each, \$2.50 per doz.

Pentstemon

Popular perennials that are very attractive massed in the border. They are graceful and useful as a cut-flower, especially with other flowers.

Barbatus torreyi. Long spikes of bright scarlet, tube-like flowers. 3 ft. June-Aug.

Gordoni splendens. A delightful novelty for the border with flowers in shades of lavender-blue and coral-pink. 2 ft.

Utahensis. Carmine flowers on 2-foot plants. A western native which does well in the East.

All Pentstemons, 25 cts. each, \$2.50 per doz., \$17.50 per 100

Pachysandra

Terminalis. *Japanese Spurge.* One of the most valuable evergreen ground-covers for dense shade or sun, border, walks, steep terraces, or under any kind of trees. Its bright, glossy, green leaves are very abundant. 6 to 8 in. \$2 per doz., \$12 per 100, \$90 per 1000.

Platycodon

Grandiflorum. *Japanese Bellflower.* Closely related to the campanula, this perennial makes a fine display with its star-like flowers and balloon-like buds. 1 to 2 ft. June, July.

Grandiflorum album. White variety of above.

All Platycodons, 25 cts. each, \$2.50 per doz., \$17.50 per 100

Plumbago

Larpentæ. R* One of the finest dwarf, spreading plants for rockery, border, or edge of pool. Deep blue flowers and leathery, heart-shaped leaves of bronzy green which turn to an attractive reddish brown in fall. 6 to 12 in. Aug., Sept. 25 cts. each, \$2.50 per doz., \$17.50 per 100.

Peonies

Well-known favorites that have a place of their own in the flower-garden and reward any extra care with a wealth of handsome blooms and profusion of rich green leaves. May through June.

Baroness Schroeder. Rose type. Late. White, with shadings of flesh. One of the finest Peonies. Its immense flowers of great substance are freely produced and last a long time.

Felix Crousse. Midseason. Large; brilliant red; good fragrance.

Festiva Maxima. Early. Beautiful large flowers of waxy white, flecked with carmine.

Karl Rosenfield. Early. Very large, globular flower. Extremely vigorous grower; tall and free flowering. Rich, velvety crimson.

Mme. Jules Dessert. Midseason. Lovely creamy white flowers. A fine variety.

Mons. Jules Elie. Midseason. Very large blooms of lilac-rose with a silvery reverse.

Reine Hortense. Midseason. Enormous, compact flower of soft flesh-color, deepening to shell-pink: center splashed crimson.

Sarah Bernhardt. Late, compact, semi-rose type; uniform mauve-rose, silver tip. Erect, tall and free blooming.

Assorted Colors. Separate or Mixed—Pink, Red, and White. 50 cts. each, \$5 per doz., \$40 per 100.

All Peonies, except where noted, \$1 each, \$10 per doz.

Phlox decussata

A very showy and extremely useful class of hardy Phloxes. They are easy to grow and deserve a prominent position in every border.

New Varieties

Daily Sketch. Extra-large heads of light salmon-pink flowers with a faint carmine eye.

Evelyn. Large, full heads of rich salmon-rose.

Flora J. Reidy. Pure white flowers in enormous heads. Tall.

Leo Schlageter. Immense heads of bright scarlet with a dark crimson eye. Strong growth.

Morgenrood. Large, bright rose clusters with a deeper eye. 3 ft.

Mrs. Ethel Prichard. Flat petals of French mauve. Very distinctive.

All above Phlox, 35 cts. each, \$3.50 per doz.

Standard Varieties

Border Gem. Rosy purple—beautiful color.

Bridesmaid. White flowers, with large rose-crimson center. Tall.

Brilliant. Shining scarlet, with darker eye.

Columbia. Plant Patent No. 118. Rich cameo-pink bloom with blue eye. Beautiful branched plants with an exceptionally long blooming season. 50 cts. each, \$5 per doz.

Enchantress. A beautiful salmon-pink.

Fiancee. One of the best pure whites. A strong grower.

Lilian. Cameo-pink with a faint blue eye. Strong growth. A notable variety.

Painted Lady. Silvery pink, with salmon shadings and cherry-red eye.

Paladin. Salmon-pink, red eye.

Rheinlander. Salmon-pink, with deep red eye.

Salmon Glow. A beautiful rich salmon-pink variety of strong-growing habit.

Salmon Queen. Large, light salmon flowers. Medium-sized plants.

Thor. One of the finest. Rich salmon-pink, deep crimson eye.

All above Phlox, except where otherwise noted, 25 cts. each, \$2.50 per doz., \$17.50 per 100

Other Phlox Varieties

Divaricata. R Lilac-blue variety that flowers in May. 10 in. 25 cts. each, \$2.50 per doz.

Suffruticosa, Miss Lingard. Pure white. Glossy foliage. Strong grower. Tall. 25 cts. each, \$2.50 per doz., \$17.50 per 100.

Subulata rosea. *Mountain Pink.* R* Very pretty, moss-like evergreen foliage. Covered with a mass of bloom in flowering season. Excellent rock-plant. 3 to 6 in. April, May.

Alba. White.

Apple Blossom. Delicate pink.

Atropurpurea. *Red Mountain Pink.*

Fairy Queen. Shell-pink.

Lilacina. Lilac.

Any of above, 20 cts. each, \$2 per doz., \$15 per 100, except where otherwise noted

Physostegia · False Dragonhead

Virginiana, Vivid. R A new dwarf variety and a great improvement on Virginiana, being much larger and better. The flowers are deep pink. 2½ ft. 25 cts. each, \$2.50 per doz., \$17.50 per 100.

Poppy, Oriental

Nothing can surpass the Poppies for a display of brilliant color during their flowering period. Whether planted singly or in masses, their large flowers and freedom of bloom render them conspicuous in any position. 2 to 3 ft. May, June.

Mrs. Perry. Salmon-rose or orange-apricot. A choice variety.

Perry's White. Satiny white with a large crimson-rose blotch.

Oriflame. Brilliant orange-scarlet.

All Oriental Poppies, 25 cts. each, \$2.50 per doz.



THE CUSHION CHRYSANTHEMUMS

The Cushion Mums are quite distinct from the taller types used for cutting, their low, broad mounds being masses of bronze, pink, or white for weeks at a time. Many uses will be found for them. Flowering season from August until frost. For prices, see pages 13, 14.

①

②

③



⑤

Turner's Fragrant Phlox

④



TURNER'S DELPHINIUMS

Whether for garden decoration, superb cut-flowers for the house, or outstanding exhibition material, there is nothing to equal Delphiniums, and Turner's strain leads all the rest. For prices, see page 14.

PHLOX

Perennial Phlox is the backbone of the late summer garden, and our list takes in all the Phlox colors in varieties that can be depended upon. Varieties selected for clearness of color, size of flowers, and, most important of all, health of plant. Turner Phlox do give satisfaction.

Illustrated here are:

- ①, Mrs. Ethel Prichard ② Leo Schlageter
- ③ Flora J. Reidy ④ Rheinlander
- ⑤ Salmon Glow

For prices, see page 16



©

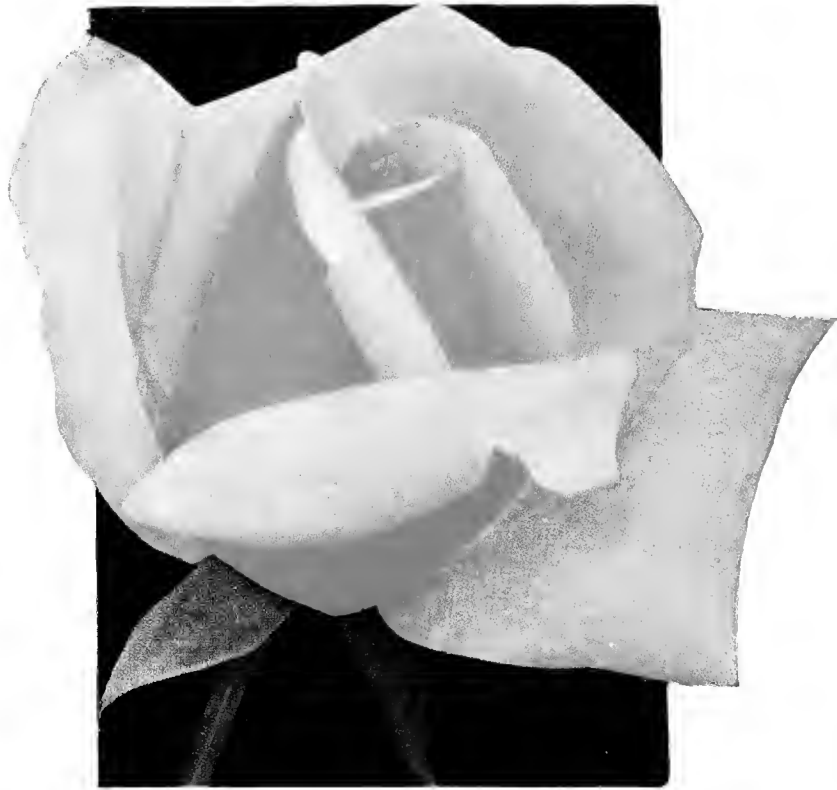
McGREDY'S SUNSET

Patent No. 317

\$1.50 each

Brighten up your garden with some of the Novelty Roses this year. The plants are healthier and hardier and some of the new colors are really thrilling.

TURNER BROS.' Roses are honestly grown plants full of a healthy urge to grow and bloom. Plant carefully, feed generously, keep the foliage clean, and do not let them dry out. They will do the rest.



MISS ROWENA THOM

75 cts. each



CRIMSON GLORY

Patent No. 105

\$1.25 each



©

McGREDY'S TRIUMPH

Patent No. 190

\$1.25 each

Primula

Munstead Giants. A choice strain of the Polyanthus type of Primrose with flowers varying from clear yellow to yellow and maroon. This is a dependable strain and very easy to grow.

Veris. The old-fashioned hardy garden Primrose, with large flowers of many beautiful colors and color combinations.

All Primulas, 25 cts. each, \$2.50 per doz.

Prunella

Webbiana. R* Pretty rock-plant with a profusion of light pink flowers, on stems 10 inches long. 25 cts. each, \$2.50 per doz.

Pyrethrum · Painted Daisy

Atrosanguineum. Red shades in mixture. 25 cts. each, \$2.50 per doz., \$17.50 per 100.

Carneum. Pink shades in mixture. 25 cts. each, \$2.50 per doz., \$17.50 per 100.

Extra Double, Mixed. Assorted colors. 30 cts. each, \$3 per doz., \$20 per 100.

Single, Mixed. Showy flowers of all shades of color, except blue and yellow, freely on long stems throughout the summer, but are at their best in May and June. Good cut-flower. 2½ ft. 20 cts. each, \$2 per doz., \$15 per 100.

Ranunculus · Buttercup

Repens fl.-pl. R A pretty, double-flowering, bright golden yellow Buttercup of creeping habit. May, June. 25 cts. each, \$2.50 per doz., \$17.50 per 100.

Rudbeckia

Laciniata, Golden Glow. A popular, hardy plant, producing masses of large, double, golden yellow flowers, shaped like a dahlia. 6 to 8 ft. Aug., Sept. 20 cts. each, \$2 per doz., \$15 per 100.

Purpurea. Purple Coneflower. Most attractive purple flower, with large, cone-shaped centers of brown and gold. 3 ft. July-Oct. 25 cts. each, \$2.50 per doz., \$17.50 per 100.

Santolina

Chamæcyparissus. R* Sweet-scented, dwarf evergreen perennial with delicate, silver-white foliage. Useful as a rock-plant for edges, walks, or border. 12 to 15 in. 25 cts. each, \$2.50 per doz., \$17.50 per 100.

Salvia · Sage

Azurea. Showy, hardy plants of medium growth and easy culture. Flowers sky-blue, on long spikes. 3 to 4 ft. Aug., Sept. 25 cts. each, \$2.50 per doz., \$17.50 per 100.

Pitcheri. This variety is similar to the above, but more branching in habit. Large rich gentian-blue flowers. 3 to 4 ft. Early autumn. 30 cts. each, \$3 per doz., \$20 per 100.

Saxifraga

Longifolia. Handsome rosettes of heavy leaves and cream-white flowers. 20 in. 25 cts. each, \$2.50 per doz.

Saponaria · Soapwort

Ocymoides alba. Pure white.

Ocymoides splendens. R Pretty prostrate border and rockery plant. The rosy pink flowers are produced in great quantities just above the foliage in May and June.

All Saponarias, 20 cts. each, \$2 per doz., \$15 per 100

Scabiosa

Caucasica. A handsome, hardy plant, with lovely flowers of a soft and charming shade of lavender. Good cut-flower. 2 ft. June-Aug. 25 cts. each, \$2.50 per doz., \$17.50 per 100.

Sempervivum

Houseleek; Hen and Chickens

Offered in many varieties. 25 cts. each, \$2.50 per doz., \$17.50 per 100.

Sedum

Dasyphyllum. R A dwarf, compact variety flowering in May and June. 30 cts. each, \$3 per doz., \$20 per 100.

Glaucum. R Excellent dwarf variety for rockeries. Prostrate and of slow growth.

Kamtschatcum. R Orange-yellow flowers, with prostrate green foliage, turning golden in autumn. July, Aug.

Pruinatum forsterlanum. R Pretty, glaucous, bluish green leaves; trailing habit; golden yellow flowers. 3 in. July. 30 cts. each, \$3 per doz., \$20 per 100.

Reflexum. R Flowers yellow. Forms a dense gray-green carpet. 1 to 3 in.

Sarmentosum. R A rapid-growing, spreading variety. May, June. 20 cts. each, \$2 per doz., \$15 per 100.

Sexangulare. R Leaves dark green and compact. Flowers yellow. 4 in.

Sieboldi. R Dwarf variety suitable for rockery. Glaucous foliage. Bright pink flowers. Loveliest of all the dwarf varieties. 9 in. Aug., Sept.

Spathulifolium. R Reddish leaves with gray in center of the rosette. Bright yellow flowers, contrasting beautifully with the foliage.

Spectabile. One of the prettiest, erect-growing species, with broad, light green foliage and immense heads of handsome rose-colored flowers. 1½ ft. Aug., Sept.

Spectabile, Brilliant. Same as above, but deep rosy crimson.

All Sedums, except where noted, 25 cts. each, \$2.50 per doz., \$17.50 per 100

Sidalcea

Choice Hybrids. A fine strain containing all colors of pink, rose, red, salmon, lilac, and heliotrope. Graceful plant with small, hollyhock-like flowers produced on slender stems. 2 to 3 ft. July, Aug. 25 cts. each, \$2.50 per doz., \$17.50 per 100.

Spergula

Pilifera. A very dwarf plant, resembling dark green moss, that will grow in full sun or shade. 15 cts. each, \$1.50 per doz., \$10 per 100.

Statice

Latifolia. R* The leathery, dark green leaves spring directly from the root-stock and the minute, feathery flowers are produced in immense heads, frequently measuring 2 feet across. The flowers are purplish blue. 1½ ft. July, Aug. 25 cts. each, \$2.50 per doz., \$17.50 per 100.

Stokesia

Cyanea. Cornflower Aster. A handsome, light blue, Aster-like flower, produced in great profusion late in season. 1½ to 2 ft. Sept.

Cyanea alba. Same as above, but white.

All Stokesias, 25 cts. each, \$2.50 per doz., \$17.50 per 100

Thermopsis

Caroliniana. During June this showy variety has large, full spikes of bright yellow flowers closely resembling the lupines. 3½ ft. 25 cts. each, \$2.50 per doz.

Thalictrum

Aquilegifolium purpureum. Useful for cutting and mixing with other flowers, having elegant, finely cut, columbine-like foliage. The rosy purple, feathery clusters of flowers and graceful foliage make it an attractive plant for the border. 2 to 3 ft. June, July.

Aquilegifolium album. White form of above.

Glaucum. A tall, robust grower with flower-heads of bright yellow. 3½ ft.

All Thalictrums, 30 cts. each, \$3 per doz., \$20 per 100

Thymus

Serpyllum coccineus. R Bright red. Dwarf-growing, prostrate, creeping perennial rock-plant, with fragrant foliage and covered with bright red flowers in June and July. 3 to 4 ft.

Serpyllum citriodorus. R Lemon-scented foliage.

Serpyllum lanuginosus. R Woolly foliage and bright pink flowers.

All Thymus, 25 cts. each, \$2.50 per doz., \$17.50 per 100

Trollius · Globe Flower

Ledebouri, Golden Queen. Large, orange-yellow flowers until the end of June. 50 cts. each, \$5 per doz., \$35 per 100.

Tunica

Saxifraga. R A pretty tufted plant with light pink flowers all summer. Slender, hair-like stems and flowers like Baby's Breath. Good for rockery. 6 in. 25 cts. each, \$2.50 per doz., \$17.50 per 100.

Tritoma

Mt. Etna. Unusually large spikes of rich glowing red flowers. July-Oct. 50 cts. each, \$5 per doz.

Pfitzeri. Splendid spikes of rich orange-scarlet. Aug., Sept. 30 cts. each, \$3 per doz.

Rufa. Six-inch spikes of yellow flowers with the upper parts tinged red. 30 cts. each, \$3 per doz.

Tower of Gold. Thick spikes of rich golden yellow. Vigorous and free flowering. 50 cts. each, \$5 per doz.

Verbascum

Phœniceum. Graceful spikes of flowers in white, pink, salmon, and violet. 30 in. 25 cts. each, \$2.50 per doz., \$17.50 per 100.

Valeriana

Coccinea, Mixed. Jupiter's Beard. Showy, hardy plant producing large corymbs of red, pink, or white flowers. 2 ft. June-Oct.

Officinalis. Hardy Garden Heliotrope. Produces showy heads of rose-tinted white flowers with delicious Heliotrope odor. 3 to 4 ft. June, July.

All Valerianas, 25 cts. each, \$2.50 per doz., \$17.50 per 100

Vinca

Minor. Trailing Myrtle. R* A trailing evergreen plant used for carpeting the ground under shrubs or trees where it is too shady for grass or other plants. Dark green, glossy foliage. Lilac-blue flowers. April, May. 25 cts. each, \$2.50 per doz., \$15 per 100.

Veronica · Speedwell

Incana. R* A white, woolly plant with numerous blue flowers. 1 ft. 25 cts. each, \$2.50 per doz., \$17.50 per 100.

Longifolia subsessilis. Very hardy and increases in strength and beauty each year. Spikes completely studded with beautiful blue flowers. 2 ft. Aug., Sept. 25 cts. each, \$2.50 per doz., \$17.50 per 100.

Repens. A spreading, creeping variety with tiny blue flowers in early spring. Good ground-cover. 25 cts. each, \$2.50 per doz.

Teucrium rupestris trehani. R Brilliant blue. 1 ft. May, June. 25 cts. each, \$2.50 per doz.

Viola

Cornuta, Apricot Queen. R* This beautiful Viola is one of the most popular introductions in recent years. It is a profuse bloomer, with extra-large flowers of dark orange color having a wide center of rich apricot. May-Nov.

Gov. Herrick. R Large, slightly fragrant flowers of clear blue, 6 inches tall. April, May.

Jersey Gem. R* Considered the best Violas ever introduced. A vigorous, bushy grower of dwarf habit and a continuous bloomer. Flowers rich violet, slightly perfumed. 6 in.

Rosina. R Lovely little pink Violets in spring and autumn and can often be found in bloom under the snow. Wonderful fragrance.

Yellow Gem. R A splendid free-blooming Viola of richest yellow.

All Violas, 25 cts. each, \$2.50 per doz., \$17.50 per 100

Yucca

Filamentosa. Adam's Needle. Stately perennial, with evergreen, sword-like leaves. The tall spikes produce white, drooping flowers in large, dense clusters. 4 to 6 ft. June, July. Very strong plants, 35 cts. each, \$3.50 per doz., \$25 per 100.



A properly built rock-garden becomes the permanent home of the world's choicest small plants.

The lovely garden pictured above is a sample of those designed, built, and planted by our Landscape Service Department.

We would like to do a real rock-garden for you, or if you already have one, let us bring it up-to-date.

ROCK-GARDEN PLANTS and Collection

FOR DESCRIPTIONS SEE GENERAL LIST

Ajuga reptans
Anchusa myosotidiflora
Armeria lauchiana
Arabis alpina

Cerastium tomentosum
Dianthus cæsius
 Iberis, Little Gem
Nepeta mussini

Phlox subulata
Physostegia virginiana, Vivid
Primula veris
Santolina chamæcyparissus

Sedum
Thymus serpyllum coccineus
Tunica saxifraga
Veronica repens

COLLECTION

3 each of the above varieties (48 plants)
 For prices of separate varieties, consult Catalogue

\$8.50

Modernize your garden with Turner Bros.' Tested Novelties

Come to the Nursery and see our collection of fine plants

You'll be pleased with the plants you select



PLANTS FOR SPECIAL LOCATIONS

Prices listed in Catalogue

Plants for Shaded Situations

DECIDUOUS SHRUBS

Aronia arbutifolia
melanocarpa
Azalea arborescens
vaseyi
viscosa
Benzoin æstivale
Cercis canadensis
Clethra

PERENNIALS

Aconitum
Ajuga reptans
Anemone, Whirlwind
Columbines
Cimicifuga
Lily-of-the-Valley
Bleeding-Heart
Eupatorium
Epimedium
Funkia

EVERGREENS

Azalea hinodegiri
Ilex crenata
American Holly
Hemlocks
Laurel
Leucothoe catesbæi

Plants Suitable for Hedges

EVERGREENS

Tall
Retinospora
Picea excelsa
Pinus strobus
Thuja occidentalis and
varieties
Tsuga canadensis

Low
Berberis julianæ
Boxwood
Retinospora hoveyi
Ilex crenata
Juniperus chinensis
pfitzeriana
Mahonia aquifolium
Taxus cuspidata brevipolia
cuspidata capitata

DECIDUOUS

Tall
Althea
Euonymus alatus
Privet
Lonicera
Lilac
Viburnum dentatum

Low
Berberis thunbergi
thunbergi atropurpurea
Cydonia japonica
Deutzia gracilis
Privet (clipped)
Polyantha Roses
Spiræa, Anthony Waterer
vanhouttei

Evergreens, Shade Trees, and Shrubs Best Suited for Seashore Planting

EVERGREENS

Colorado Spruce
Koster's Blue Spruce
Austrian Pine
Scotch Pine

Mugho Pine
Juniperus excelsa stricta
Taxus (all varieties)
Ilex opaca

SHADE TREES

Oriental Plane Oaks Sweet Gum

SHRUBS

Hydrangea arborescens
grandiflora
Hydrangea hortensis
Rosa rugosa

Privet
Clethra alnifolia
Viburnum dentatum

Shrubs and Trees to Attract Birds

SHRUBS

Aronia arbutifolia
melanocarpa
Benzoin æstivale
Berberis thunbergi
Symphoricarpos racemosus

Lonicera morrowi
tatarica
Viburnum dentatum
lentago
opulus

TREES

Betula alba
Cornus florida
Juniperus virginiana
Malus floribunda

Pinus austriaca
strobus
Tsuga canadensis

Shrub Combinations

Forsythia and Azalea mucronulatum.
Buddleia and Hypericum moserianum.
Spiræa vanhouttei and Purple-leaved Barberry.
Buddleia, Ile de France and Hydrangea paniculata.
Forsythia, mauve Tulips, and Arabis alpina.
Spiræa thunbergi and soft lavender Tulips.
Cercis and white Dogwood.
Pieris japonica and Phlox subulata, Blue Hill.
Azaleas and ground-cover of Vinca minor, Violets or
Lily-of-the-Valley.
Weeping Cherry and Grape Hyacinths.

Ground-Covers

For Shady Places

Ajuga reptans
Lily-of-the-Valley
English Ivy
Pachysandra terminalis
Veronica repens
Vinca minor

For Sunny Places

Helianthemum
Juniperus horizontalis
prostrata
sargentii
Pachysandra terminalis
Phlox subulata
Sedums
Thymus serpyllum

Perennial Border

SPRING

Delphinium and Phlox, Miss Lingard.
Phlox divaricata and Tulips, pink or yellow.
Hemerocallis flava and Iris sibirica or Campanula
glomerata.
Bleeding-Heart, white German Iris, and Iberis.
Delphinium chinensis and yellow Aquilegia.
Anthemis and Delphinium.
Peony, Festiva Maxima and Dianthus latifolius atro-
coccineus.
Primula, Violets, and Anchusa myosotidiflora.
Trolius and Anchusa myosotidiflora.
Linum perenne, Cerastium tomentosum, and Poppy,
Mrs. Perry.
Campanula persicifolia and Heuchera.

SUMMER

Delphinium Hybrids and Madonna Lilies.
Shasta Daisy, Anthemis, and Delphinium Belladonna.
Anchusa italica and Anthemis.
Monarda didyma and white Phlox or Gypsophila.
Phlox, Painted Lady; Heliotrope, Royal Fragrance; and
white Petunia.
Veronica longifolia subsessilis and Rudbeckia purpurea.
Lychnis chalconica and Gypsophila.

AUTUMN

Delphiniums; Helenium, Riverton Beauty; and Helian-
thus.
Eupatorium cœlestinum and Chrysanthemum core-
anum.
Anemone, Whirlwind and Aconitum or Buddleia.

Rock-Garden

Aquilegia flabellata nana and Arenaria grandiflora.
Cerastium tomentosum and Heuchera, La Perle.
Viola, Jersey Gem and Arabis alpina or Iris pumila,
Canary Bird.
Alyssum saxatile and Anchusa myosotidiflora.

HYBRID TEA OR EVERBLOOMING ROSES

These are the most popular of all Roses because of their ever-blooming habit and variety of color. We have always made a special effort to deliver extra-fine, strong, budded plants direct to the customer from our nursery where they are grown. This insures fresh, vigorous plants that will thrive and bring much joy and satisfaction to the grower. It has been very gratifying to receive many favorable comments regarding the type of Rose plants we have delivered to satisfied customers in the past.

Roses like a deep bed of about 12 to 14 inches of good soil, with well-decayed manure spaded in. Set bushes 1½ to 2 feet apart, placing them so that the junction of branches and root is just covered with soil. All classes of Roses should be pruned back severely to about 6 to 8 inches when planted.

Protect Hybrid Teas in the winter by hilling the soil up around the plants and covering with a litter of straw manure or leaves. Be sure to remove this early in spring.

Extra-strong plants, 75 cts. each, \$7.50 per doz., \$50 per 100, except where noted

Alice Harding. Plant Patent No. 202. The finest yellow Rose to date, with large, prize-winning flowers of golden yellow which does not mind the sun. The yellow Rose for exhibitions. A generous bloomer. \$1.50 each, \$15 per doz.

Amelia Earhart. Plant Patent No. 63. Large, cream-colored buds covered with blushes; double blooms, deep yellow in center lightening to cream with a blush overtone on the outer petals; delightful fragrance. Bushy plants which bloom freely. A real exhibition Rose as every bloom is perfect. \$1.25 each, \$12.50 per doz.

Betty Uprichard. A very fine Rose, unsurpassed in vigor, blooming, color, and resistance to heat or drought. Copper-red buds, opening to flowers of brilliant orange-carmine on outer surface of petals, showing light salmon reflexes.

Briarcliff. Large, pointed buds and double, high-crowned, fragrant blooms of brilliant rose-pink on good stems.

Charles P. Kilham. Large, beautifully shaped blooms of brilliant red-orange, suffused with glowing scarlet; slightly fragrant. Foliage resistant to mildew. Vigorous, bushy, upright.

Countess Vandal. Plant Patent No. 38. Superb, bronze-tinted buds with rose and orange tones, opening to huge, shapely, salmon-pink flowers flushed with gold and flesh tones. A consistent winner of first-prize honors. \$1 each.

Crimson Glory. Plant Patent No. 105. Urn-shaped, black buds open to large, deep crimson flowers with a velvety nap. Has the old-time fragrance. Branching plants. \$1.25 each, \$12.50 per doz.

Duchess of Wellington. For many years considered the best yellow Rose. Enormous, tapering buds of golden orange, slowly opening to very large saffron-yellow blooms. Very vigorous and healthy.

Eclipse. Plant Patent No. 172. Long, slender, rich gold buds open to big loose flowers of deep golden yellow. Strong plants blooming freely all season. \$1.25 each, \$12.50 per doz.

Edith Nellie Perkins. An exceedingly fine, soft creamy pink flower deeply stained with ruddy copper tones on the backs of the petals. Fragrant, free flowering, and vigorous.

Eduard Schill. Very large, semi-double flowers of a peculiar shade of brick-red flushed with yellow. Plants of extra vigor, with glossy foliage. \$1 each, \$10 per doz.

Eternal Youth. Plant Patent No. 332. Long pink buds opening to high-centered, double flowers of rich pink. Vigorous growth. \$1.50 each, \$15 per doz.

Etoile de Hollande. Considered by many the best red Rose. Brilliant red blooms of magnificent size, perfect in half-open state, showing clean, attractive centers when fully open; petals enormous; very fragrant.

Gloaming. Plant Patent No. 137. Glorious long buds open to large, artistically formed flowers of soft satiny pink, flushed with amber. Exquisite. \$1 each, \$10 per doz.

Glowing Sunset. Plant Patent No. 104. Double flowers of loose form in an indescribable blend of orange-yellow and rose-pink; fragrant. \$1 each, \$10 per doz.

Golden Dawn. One of the finest of all garden Roses. Large, double, very fragrant flowers of pale straw-yellow are freely produced on a splendid plant.

Golden Main. Plant Patent No. 254. Medium-sized, double blooms of clean, glistening, dandelion-yellow. Strong growth with attractive shiny foliage. \$1.25 each, \$12.50 per doz.

Golden Rapture. A new yellow Rose of upright growth and fine cutting value. The large, double, pure yellow flowers hold their color. \$1 each, \$10 per doz.

Jean Cote. Plant Patent No. 321. Mammoth, double flowers of dark orange, almost brown; rich fruity fragrance. Medium growth with glossy foliage. \$1.50 each, \$15 per doz.

Joanna Hill. A glorified Mrs. Aaron Ward. Heavy lemon buds, developing into very double blooms with Indian-yellow centers, surrounded by bold, buff petals.

Kaiserin Auguste Viktoria. Considered best white. An old standard variety with creamy white buds opening to perfectly formed blooms of snowy white.

Lady Alice Stanley. One of the best and most dependable Roses. Massive buds and blooms of very large size, fully double, with outside petals coral-rose, inside pale flesh-pink. Unusually disease-resistant.

Margaret McGredy. Brilliant red petals on hinges of deep gold. Buds upright. Free. One of the thoroughly dependable Roses for every garden. The plants are vigorous and produce their blooms in unending succession all summer and fall.

Max Krause. Deep buttery yellow buds and large, rich yellow flowers.

McGredy's Ivory. Long buds with greenish markings, opening white. Sweet-scented, ivory, nicely formed, double flowers. An excellent Rose.

McGredy's Pink. Plant Patent No. 341. Large, globular flowers of pearly cream and pink with a saffron-yellow base; sweetly scented. Healthy plants with lots of bloom. \$1.50 each, \$15 per doz.

McGredy's Pride. Plant Patent No. 339. Orange and salmon-pink flowers flushed and veined saffron-yellow. The blooms are double and last a long time. Typical, strong, healthy McGredy plant. \$1.50 each, \$15 per doz.

McGredy's Scarlet. Handsome, loosely formed, crimson Rose with glorious orange-scarlet sheen in the depths of its velvety petals. Plant unusually strong.

McGredy's Sunset. Plant Patent No. 317. Chrome-yellow, flushed scarlet inside and clear buttercup-yellow outside, is the color of this remarkable Rose which is pleasingly fragrant. Bushy plants of average height. \$1.50 each, \$15 per doz.

McGredy's Triumph. Plant Patent No. 190. Geranium-red, flushed orange with deep orange at base, is the color of the mammoth blooms which must be enjoyed on the plant as they wilt quickly when cut. \$1.25 each, \$12.50 per doz.

McGredy's Yellow. Long-pointed buds of deep yellow open to perfectly formed, fragrant flowers of bright buttercup-yellow. Upright, healthy plants. \$1.50 each, \$15 per doz.

Miss America. Plant Patent No. 264. Large, very double blooms of perfect form are produced in endless succession all during the growing season, on bushy plants of average height. The color is flesh with a salmon and gold suffusion. Fragrant. \$1 each, \$10 per doz.

Miss Rowena Thom. A striking novelty with gigantic blooms of brilliant satiny pink, shaded with orange-flame at center. Strong grower.

Mme. Jean Gaujard. Plant Patent No. 338. A two-toned Rose of earmine-buff outside and yellow-buff inside, changing to soft buff. \$1.50 each, \$15 per doz.

Mme. Joseph Perraud. A superb Rose of a "different" coloring—golden buff with a pinkish tint toward the edges of the petals. \$1 each, \$10 per doz.

Mrs. Erskine Pembroke Thom. One of the finest yellow Roses, with long buds opening into perfectly shaped flowers of rich lemon-yellow. Very vigorous and disease-resistant.

Mrs. Henry Morse. Flowers are bright pink, with silvery shadings, and are incessantly produced by low, branching bushes. Large buds and flowers.

Mrs. Pierre S. du Pont. Well-shaped golden yellow flowers and bushy, compact plants. Delightful spicy fragrance. This is the most generous-blooming yellow Rose we have today.

Mrs. W. E. Nickerson. Long, slender buds and deep, high-centered flowers with large petals of soft silvery pink, deeply shaded with old-gold and salmon.

Oswald Sieper. Large exhibition-quality flowers of creamy white. Average plants.

Pink Dawn. Lovely buds of deep rose open to splendidly formed flowers of a clean shade of pink tinted with orange at the base. Sweet fragrance. \$1 each, \$10 per doz.

President Herbert Hoover. An outstanding novelty of a real new color-combination—maroon, orange, and gold, rioting in the most contrasting fashion. Long-pointed buds, rigid stems, and good grower.

Radiance. The most reliable and most planted of all Roses. It has no equal for vigor and foliage. Brilliant rose-pink bloom of excellent globular shape and fragrance.

Radiant Beauty. Plant Patent No. 97. A sport of Francis Scott Key with less petals, so that it opens perfectly. Large red blooms of perfect imbricated form. \$1 each, \$10 per doz.

Red Radiance. Bright rosy red form of Radiance, with same qualities.

Rex Anderson. Plant Patent No. 335. Exhibition blooms of cream, aging pure white. Vigorous plants which bloom freely. A beautiful Rose. \$1.50 each, \$15 per doz.

Richard E. West. Perfectly formed, high-centered flowers of clear cadmium-yellow, borne singly on long stems; intensely fragrant.

R. M. S. Queen Mary. Plant Patent No. 249. Splendid bushy plants branching freely, with each branch ending in a bloom. The flowers are a blend of salmon, pink, and orange. A beautiful bloom with delicate fragrance. \$1.50 each, \$15 per doz.

Rome Glory. Plant Patent No. 304. A strong-growing plant comparing with some of the Hybrid Perpetuals. Splendid flowers of luminous cerise-red; delightful fragrance. Extra winter hardiness. \$1.50 each, \$15 per doz.

Roslyn. One of the newer Roses, with nicely formed flowers of deep golden yellow, very double, borne singly on long stems. Vigorous, compact growth.

Signora. Plant Patent No. 201. Long, burnt-orange buds open to double flowers of orange and pink. Unusually tall plants, always in bloom, and the flowers are excellent cut-flowers. \$1.25 each, \$12.50 per doz.

SPECIAL ROSE COLLECTION \$6.75 (12 Plants)

This Collection consists of varieties noted for their strong habit of growth, hardiness, profusion of flower, and range of color. For description, consult Catalogue. All plants in this Collection are extra-strong, first-grade Roses.

Betty Uprichard	McGredy's Ivory	Sœur Therese
Edith Nellie Perkins	McGredy's Scarlet	Sunkist
Etoile de Hollande	Miss Rowena Thom	Talisman
Golden Dawn	Mrs. Pierre S. du Pont	Thomas Edison

TULLY

Phone Cabinet

Street or Rural Route

Post Office

County

State

Zip Code

Name

1980

1981

1982

1983

1984

1985

1986

1987

1988

1989

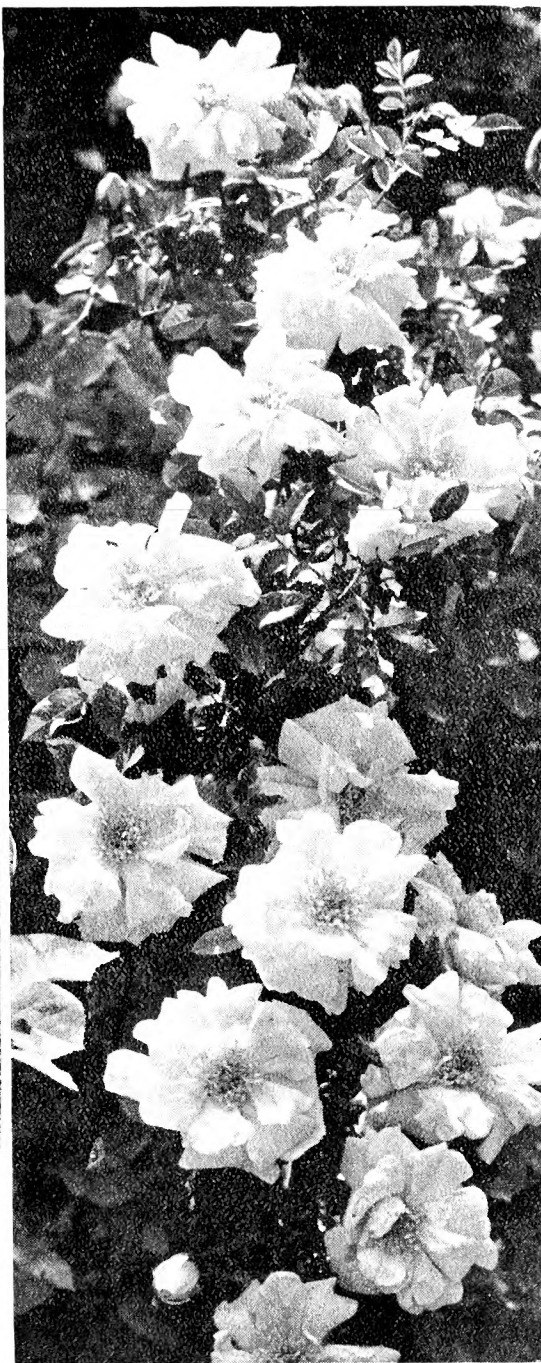


HYBRID TEA OR EVERBLOOMING ROSES, continued

- Sœur Therese.** Exquisite, tapering, golden yellow buds and rich buff-colored flowers.
- Souv. de Mme. C. Chambard.** Enormous, perfectly shaped flowers of striking salmon-pink with golden suffusion.
- Sunkist.** Rich brownish orange form of the well-liked Joanna Hill. Splendid for cutting.
- Talisman.** The most astounding Rose novelty produced in years. Its brilliant yellow and orange-red buds open to large, fragrant blooms of glowing golden yellow, stained with copper-red and orange-rose on inside of the petals. Extremely vigorous and healthy grower.
- Thomas A. Edison.** Vigorous bushes with well-shaped silvery pink flowers especially good in midsummer.

Hardy Climbing Roses

- 75 cts. each, \$7.50 per doz., \$50 per 100, unless noted
- American Beauty.** Double, brilliant carmine flowers of especially fine form and rich perfume, borne in clusters.
- Blaze.** Plant Patent No. 10. Remarkable new everblooming form of Paul's Scarlet Climber with clusters of blazing red flowers all summer. Suitable for pillars or big shrub use. \$1 each.
- Chaplin's Pink Climber.** A new, beautiful, bright clear pink Climber that is extremely free flowering, covering itself completely with sheets of bloom.
- Doubloons.** Plant Patent No. 152. A yellow climbing Rose that is really hardy. Large, double buff-yellow flowers are produced in clusters over a long period. The Rose you are waiting for. \$1.50 each.
- Dr. W. Van Fleet.** Large flowers of exquisite pale pink on fine, long stems. Extremely vigorous and glossy foliage.
- Emily Gray.** A beautiful yellow Climber with golden buds and blooms that do not fade. Very attractive, glossy foliage.



HARDY CLIMBING ROSES, continued

- Golden Climber (Mrs. Arthur Curtiss James).** Plant Patent No. 28. Vigorous habit. Flowers large, unfading golden yellow. Best hardy yellow-flowering climbing Rose. \$1 each.
- Jacotte.** Sensational Rose with holly-like foliage and large, semi-double flowers of orange-yellow, tinted copper-red, borne in clusters.
- Mary Wallace.** Outstanding large-flowered pink Climber. It is a rapid grower, with very brilliant pink, long-stemmed flowers good for cutting.
- New Dawn.** Plant Patent No. 1. A marvelous new introduction, and the only Hardy Climber as yet that blooms all summer. It resembles the old Dr. W. Van Fleet in every other respect. \$1.50 each.
- Papa Gouchault.** Strong-growing Rambler with clusters of small, double scarlet-crimson flowers.
- Paul Noel.** Vigorous Climber with clusters of large, double salmon-pink flowers.
- Paul's Scarlet Climber.** The most popular red-flowering Climber of the day. Flowers large, well shaped, vivid scarlet-red.
- Silver Moon.** The favorite white Climber. Flowers semi-double, very large, with brilliant yellow stamens. Perfect foliage.

Everblooming Shrub Rose

- Skyrocket.** Brilliant red blooms. Of sturdy, upright habit, desirable to plant with other flowering shrubs. \$1 each, \$10 per doz.



Polyantha or Baby Rambler Roses

75 cts. each, \$7.50 per doz., \$50 per 100

- This type ordinarily is dwarfed and bushy, seldom growing more than 2 feet. It is very hardy, extremely easy to grow, and flowers continuously all summer.
- Gloria Mundi.** (New.) Large clusters of striking reddish orange buds and blooms of most amazing color. Compact bushes.
- Ideal.** A fine dark red variety that produces small flowers in large clusters.
- Miss Edith Cavell.** Semi-double flowers of brilliant scarlet-red, shaded darker, produced in large clusters.
- Mrs. W. H. Cutbush.** Soft pink flowers borne in heavy clusters.
- Orleans.** The most popular light red sort for many years. Fine bushy plants crowded with clusters of flowers all summer.
- Triomphe Orleanais.** A profuse-blooming light crimson variety, a shade darker than Orleans Rose. One of the finest.

The Queen of Flowers looks and does best in a garden by itself.

Let our Landscape Service design and plant a real Rose-Garden for you.

TRI-OGEN

The all-purpose spray for Roses. Prevents disease and destroys all insects. Does not injure foliage.

- A. Small kit (makes 16 qts.).....\$1 50
- B. Medium kit (makes 64 qts.)..... 4 00
- C. Large kit (makes 32 gals.)..... 6 00
- D. Estate kit (makes 128 gals.).....20 00

